

**TECHNICAL MANUAL**

**GENERAL SUPPORT MAINTENANCE  
REPAIR PARTS AND SPECIAL TOOLS LISTS  
(INCLUDING DEPOT MAINTENANCE  
REPAIR PARTS AND SPECIAL TOOLS)**

**FOR**

**TEST SET, CRYOGENIC  
REFRIGERATOR**

**AN / AAM-40**

**(NSN 4130-00-197-6347)**

**AND**

**SERVICE KIT, REFRIGERANT**

**MK-1171 / AAS-24**

**(NSN 4940-00-403-1007)**

---

**HEADQUARTERS, DEPARTMENT OF THE ARMY**

**MAY 1976**

TECHNICAL MANUAL }  
 No. 11-6625-2446-40P }

HEADQUARTERS  
 DEPARTMENT OF THE ARMY  
 WASHINGTON, D.C., 7 May 1976

**GENERAL SUPPORT MAINTENANCE  
 REPAIR PARTS AND SPECIAL TOOLS LIST  
 (INCLUDING DE POT MAINTENANCE REPAIR PARTS AND SPECIAL TOOLS)  
 FOR  
 TEST SET, CRYOGENIC REFRIGERATOR AN/AAM-40  
 (NSN 4130-00-197-6347)  
 AND  
 SERVICE KIT, REFRIGERANT MK-1171/AAS-24  
 (NSN 4940-00-403-1007)  
 Current as of 15 October 1975**

	Page	Figure
SECTION	I. Introduction	1
SECTION	II. Repair Parts List	5
Group	00 Test Set, Cryogenic Refrigerator AN/AAM-40	5 1
	1 Pump Group, Vacuum OA-8590/AAM-40	5 2
	1A1 Power Supply PP-6527/AAM-40	5 3
	1A1A1 Leak detection assembly	8 4
	1A1A2 High vacuum unit, cryogenic	12 5
	1A1A3 Power supply, high voltage	12 6
	1A2 Filter assembly	12 7
	1MP13 Assembly, Vacuum Pump HD-882/AAM-40	12 8
	2 Test Set, Control Group OK-155/AMM-40	18 9
	2A1 Panel assembly, control, unit 2	18 10
	2A1A1 Filter assembly, unit 2	23 11
	2MP2 Control Group CX-1116/AAM-40	18 9
	3 Test Set, Maintenance Group OQ-75/AAM-40	23 12
	3A1 Test Set, Cryogenic Refrigerator TS-3016/AAM-40	27 13
	3MP1 Case Test Set CY-6946/AAM-40 (No parts authorized)	
	3MP2 Mount, Pinch-Off Tool MT-4313/AAM-30	27 13
	3MP3 Nozzle, Helium MX-8803/AAM-40	27 14
	3MP6 Guillotine, Pinch-Off Tool Assembly TL-770/AAM-40	27 15
	4 Evacuation Charging Group OA-8591/AAM-40	31 16
	4MP3 Case Test Set CY-6947/AAM-40 (No parts authorized)	
	4MP8 Manifold Charging and Testing Refrigerant MX-8807/AAM-40	31 17
	4MP10 Plate, Receiver Optics MT-4314/AAM-40 (No parts authorized)	
	6 Compressor, Rotary HD-841/AAS-24	31 18
SECTION	III. Special Tools List (Not applicable)	
	IV. FSN, Part No. Index	38
	V. Repair Parts List	44
Group	1. Service Kit, Refrigerant MK--1171/AAS-24	44 19
	1MP1 Bottle, carbon dioxide	44 20
	1MP2 Bottle, helium, modified	44 21
	1MP3 Case, Service Kit CY-6872/AAS-24 (No parts authorized)	
SECTION	VI. Special Tools List (Not applicable)	
	VII. FSN, Part No. Index	48

\*This manual supersedes TM 11-6625-2446-40P, 25 June 1973

**SECTION I**  
**INTRODUCTION**

**1. Scope**

This manual lists repair parts; special tools; and other support equipment required for performance of general support and depot maintenance of the Test Set, Cryogenic Refrigerator AN/AAM-40 and Service Kit, Refrigerant MK-1171/AAS-24.

**2. General**

This Repair Parts and Special Tools List is divided into the following sections:

*a. Section II—Repair Parts List.* A list of repair parts authorized for use in performance of maintenance of the Test Set, Cryogenic Refrigerator AN/AAM-40. The list also includes parts which must be removed for replacement of the authorized parts. Parts lists are composed of functional groups in ascending numerical sequence, with the parts in each group listed in figure and item number sequence.

*b. Section III—Special Tools List.* Not applicable.

*c. Section IV—Federal Stock Number and Part Number Index.* A list, in ascending numerical sequence, of all Federal stock numbers appearing in section II, followed by a list, in alphameric sequence, of all part numbers appearing in section II. Federal stock number and part numbers are cross-referenced to each illustration figure and item number appearance.

*d. Section V—Repair Parts List.* A list of repair parts authorized for use in the performance of maintenance of the Service Kit, Refrigerant MK-1171/AAS-24. The list also includes parts which must be removed for replacement of the authorized parts. Parts lists are composed of functional groups in ascending numerical sequence, with the parts in each group listed in figure and item number sequence.

*e. Section VI—Special Tools List.* Not applicable.

*f. Section VII—Federal Stock Number and Part Number Index.* A list, in ascending numerical sequence, of all Federal Stock numbers appearing in section V, followed by a list, in alphameric sequence of all part numbers appearing in section V. Federal stock number and part numbers are cross-referenced to each illustration figure and item number appearance.

**3. Explanation of Columns**

The following provides an explanation of columns found in the tabular listings:

*a. Illustration.* This column is divided as follows:

(1) *Figure number.* Indicates the figure number of the illustration in which the item is shown.

(2) *Item number.* The number used to identify each item called out in the illustration.

*b. Source, Maintenance, and Recoverability Codes (SMR).*

(1) *Source code.* Source codes are assigned to support items to indicate the manner of acquiring support items for maintenance, repair, or overhaul of end items. Source codes are entered in the first and second positions of the Uniform SMR Code format as follows:

<i>Code</i>	<i>Definition</i>
PA	Item procured and stocked for anticipated or known usage.
PD	Support item, excluding support equipment, procured for initial issue or outfitting and stocked only for subsequent or additional initial issues or outfittings. Not subject to automatic replenishment.
AH	Item to be assembled at general support maintenance level
XA	Item is not procured or stocked because the requirements for the item will result in the replacement of the next higher assembly.
XB	Item is not procured or stocked. If not available through salvage, requisition.

**NOTE**

Cannibalization or salvage may be used as a source of supply for any items source coded above except those coded XA, XD, and aircraft support items as restricted by AR 700-42.

(2) *Maintenance code.* Maintenance codes are assigned to indicate the levels of maintenance authorized to USE and REPAIR support items. The maintenance codes are entered in the third and fourth positions of the Uniform SMR Code format as follows:

(a) The maintenance code entered in the third position will indicate the lowest maintenance level authorized to remove, replace, and use the support item. The maintenance code entered in the third position will indicate one of the following levels of maintenance:

**TM 11-6625-2446-40P**

<i>Code</i>	<i>Application/Explanation</i>
O	Support item is removed. replaced. used at the organizational level.
F	Support item is removed. replaced, used at the direct support level.
H	Support item is removed. replace. used at the general support level.
D	Support items that are removed, replaced, used at depot. mobile depot. specialized repair activity only.

**NOTE**

Codes "I" and "F" will be considered the same by direct support units.

(b) The maintenance code entered in the fourth position indicates whether the item is to be repaired and identifies the lowest maintenance level with the capability to perform complete repair (i.e., all authorized maintenance functions). This position will contain one of the following maintenance codes:

<i>Code</i>	<i>Application/Explanation</i>
H	The lowest maintenance level capable of complete repair of the support item is the general support level.
D	The lowest maintenance level capable of complete repair of the support item is the depot level, performed by Depot.
L	Repair restricted to designated specialized repair activity.
Z	Nonreparable. No repair is authorized.

(3) *Recoverability code.* Recoverability codes are assigned to support items to indicate the disposition action on unserviceable items. The recoverability code is entered in the fifth position of the Uniform SMR Code format as follows:

**Recoverability**

<i>Codes</i>	<i>Definition</i>
Z	Nonreparable item. When unserviceable, condemn and dispose at the level indicated in position 3.
H	Reparable item. When economically reparable, condemn and dispose at the general support level.
D	Reparable item. When beyond lower level repair capability, return to depot. Condemnation and disposal not authorized below depot level.
L	Reparable item. Condemnation, and disposal not authorized below depot/specialized repair activity level.

c. **Federal Stock Number.** Indicates the Federal stock number assigned to the item.

**NOTE**

For requisitioning purposes, the Federal stock number must be converted to the National stock number by adding "00" after the Federal stock classification (FSC) code (first four digits). For example, FSN 0625-553-0142 converts to NSN 0625-00-553-0142.

d. **Part Number.** Indicates the primary number used by the manufacturer (individual, company, firm, corporation, or Government activity), which controls the design and characteristics of the item by

means of its engineering drawings, specifications standards, and inspection requirements, to identify an item or range of items.

**NOTE**

When a stock numbered item is requisitioned, the repair part received may have a different part number than the part being replaced.

e. **Federal Supply Code for Manufacturer (FSCM).** The FSCM is a 5-digit numeric code listed in SB 708-42 which is used to identify the manufacturer, distributor, or Government agency, etc.

f. **Description.** Indicates the Federal item name and, if required, a minimum description to identify the item.

g. **Unit of Measure (U/M).** Indicates the standard of the basic quantity of the listed item as used in performing the actual maintenance function. This measure is expressed by a two-character alphabetical abbreviation (e.g., ea, in, pr, etc). When the unit of measure differs from the unit of issue, the lowest unit of issue that will satisfy the required units of measure will be requisitioned.

h. **Quantity Incorporated in Unit.** Indicates the quantity of the item used in the breakout shown on the illustration figure, which is prepared for a functional group, subfunctional group, or an assembly. A "V" appearing in this column in lieu of a quantity indicates that no specific quantity is applicable, (e.g., shins, spacers, etc).

**4. Special Information**

The following publications pertain to the Test Set, Cryogenic Refrigerator AN/AAM-40 and Service Kit, Refrigerant MK-1171/AAS-24, TM 11-6625-2446-12 Test Set, Cryogenic Refrigerant AN/AAM-40 and TM 11-6625-2446-45 Service Kit, Refrigerant MK-1171/AAS-24.

**5. How to locate the Repair Parts**

a. When Federal stock number or part number is unknown:

(1) *First.* Using the table of contents, determine the functional group within which the repair part belongs. This is necessary since illustrations are prepared for functional groups, and listings are divided into the same groups.

(2) *Second.* Find the illustration covering the functional group to which the repair part belongs.

(3) *Third.* Identify the repair part on the illustration and note the illustration figure and item number of the repair part.

(4) *Fourth.* Using the Repair Parts Listing, find the figure and item number noted on the illustration.

a. When Federal stock number or part number is known:

(1) *First.* Using the Index of Federal Stock Numbers and Part Numbers, find the pertinent Federal stock number or part number. This index is in ascending FSN sequence followed by a list of part numbers in ascending alphameric sequence, cross-reference to the illustration figure number and item number.

(2) *Second* After finding the figure and item number, locate the figure and item number in the repair parts list.

**6. Abbreviations**

Not applicable.

**7. Recommendation for Maintenance Publication Improvements**

You can help to improve this manual by calling attention to errors and by recommending improvements. Your letter or DA Form 2028 (Recommended Changes to Publications and Blank Forms) should be mailed directly to Commander, US Army Electronics Command, ATTN: DRSEL-MA-Q, Fort Monmouth, NJ 07703. A reply will be furnished directly to you.

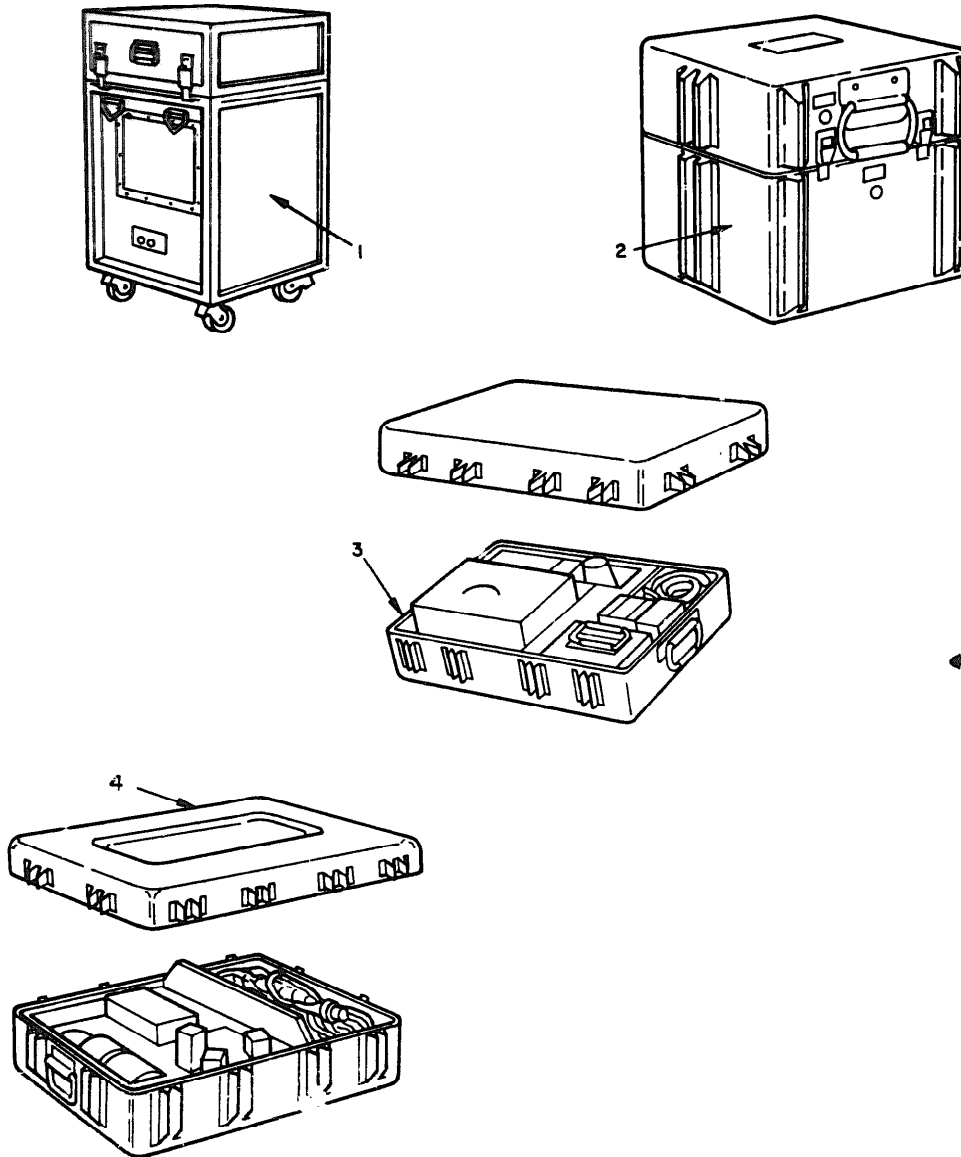
(Next printed page is 5.)

## SECTION II REPAIR PARTS LIST

TM 11-6625-2446-40P

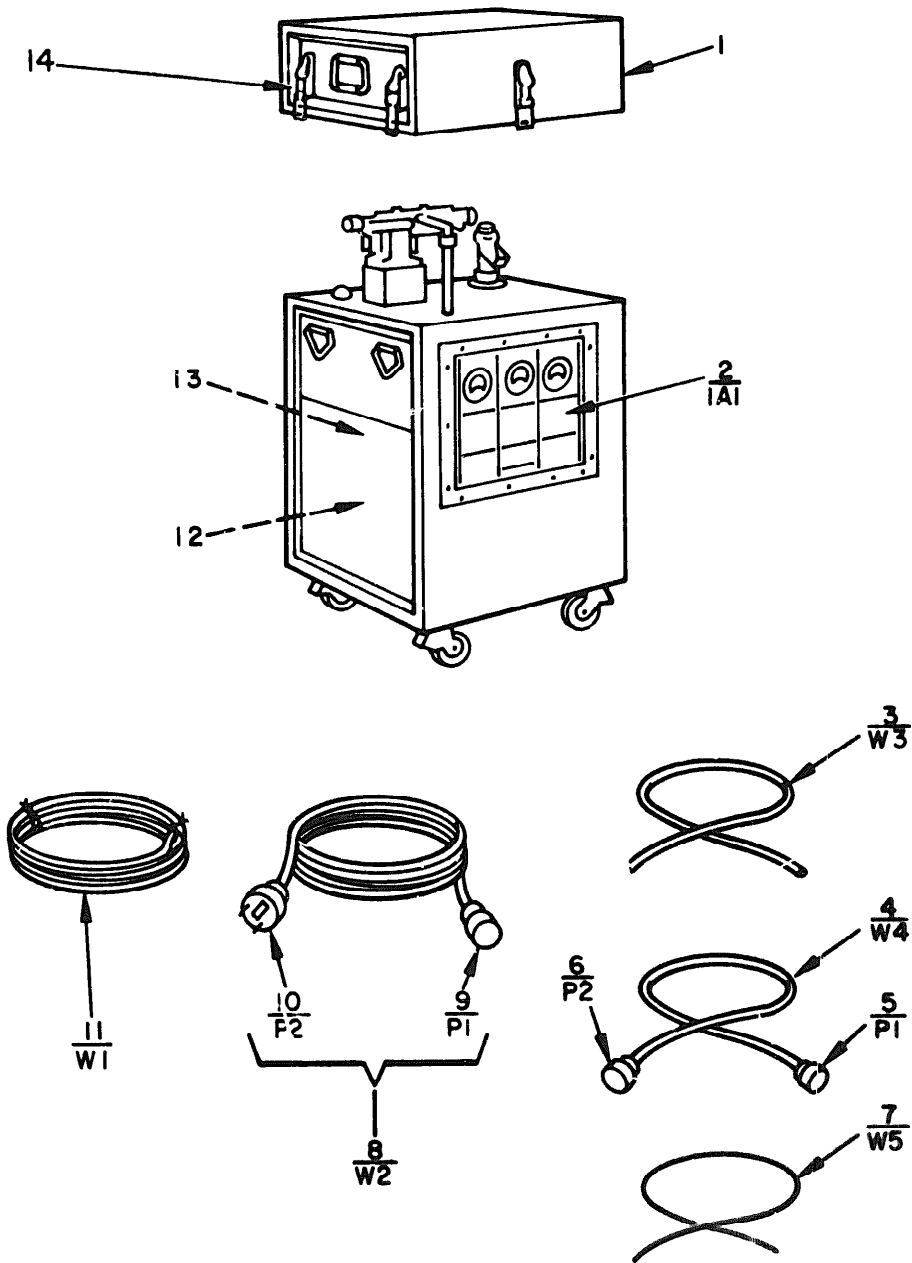
(1) ILLUSTRATION		(2) SMR CODE	(3) FEDERAL STOCK NUMBER	(4) PART NUMBER	(5) FSCM	(6) DESCRIPTION	(7) UNIT OF MEAS	(8) QTY INC IN UNIT
(A) FIG NO.	(B) ITEM NO.					USABLE ON CODE		
						GROUP: 00 TEST SET, CRYOGENIC REFRIGERATOR AN/AAM-40		
1	1	PDODD	4130-197-6350	694741-1	96214	VACUUM PUMP GROUP OA-8590/AAM-40	EA	1
1	2	PDODD	4130-197-6346	694743-1	96214	CONTROL GROUP, TEST SET OK-155/AAM-40	EA	1
1	3	PDODD	4130-197-6338	694744-1	96214	TEST SET-MAINTENANCE GROUP OQ-75/AAM-40	EA	1
1	4	PDODD	4130-197-6343	694745-1	96214	EVACUATION-CHARGING GROUP OA-8591/AAM-40	EA	1
						GROUP: 1 PUMP GROUP, VACUUM OA-8590/AAM-40		
2	1	PDODD	4310-407-7035	696303-1	96214	COVER, VACUUM PUMP	EA	1
2	2	PDOHH	4130-197-6351	694738-1	96214	POWER SUPPLY PP-6527/AAM-40	EA	1
2	3	PAOZZ	4130-197-6350	692221-1	96214	CABLE ASSEMBLY, SPECIAL PURPOSE, ELECTRICAL	EA	1
2	4	PAOHH	4130-230-3760	696239-1	96214	CABLE ASSEMBLY, INTERNAL CONTROL	EA	1
2	5	PAHZZ	5935-726-1322	694311-12	96214	CONNECTOR, PLUG, ELECTRICAL	EA	1
2	6	PAHZZ	5935-765-5976	694311-34	96214	CONNECTOR, PLUG, ELECTRICAL	EA	1
2	7	PAHZZ	4310-484-8615	B97794-031-0	14937	LEAD, JUMPER	EA	1
2	8	PAOHD	6625-470-4315	692145-2	96214	CABLE ASSEMBLY, POWER, ELECTRICAL	EA	1
2	9	PAHZZ	5935-843-7133	UP106M	81349	CONNECTOR, PLUG, ELECTRICAL	EA	1
2	10	PAHZZ	5935-761-3885	MS3126F14-5S	96906	CONNECTOR, PLUG, ELECTRICAL	EA	1
2	11	PAOHD	6625-196-2844	692144-2	96214	CABLE ASSEMBLY, POWER ELECTRICAL	EA	2
2	12	AHHDD		696277-1	96214	FILTER, ASSEMBLY	EA	1
2	13	PDODD	4310-407-7032	D97794-000-0	14937	VACUUM PUMP, ASSEMBLY	EA	1
2	14	XBHZZ		694711-3	96214	CASE, SUBASSEMBLY, UNIT 1	EA	1
						GROUP: 1A1 POWER SUPPLY PP-6527/AAM-40		
3	1	PAHLL	4130-230-3762	692424-1	96214	LEAK DETECTION MODULE	EA	1
3	2	PAHLL	4130-230-3761	692427-1	96214	HIGH VACUUM UNIT, CRYOGENIC MODULE	EA	1
3	3	PAHZZ	5950-481-3085	692089-1	96214	TRANSFORMER	EA	1
3	4	PAHZZ	5940-983-6053	37TB12	81349	TERMINAL BOARD	EA	1
3	5	PAHLL	4130-230-3769	696249-1	96214	POWER SUPPLY, HIGH VOLTAGE	EA	1
3	6	XBHZZ		696219-1	96214	CHASSIS, PANEL, HIGH VACUUM UNIT	EA	1
3	7	XBHZZ		696034-2	96214	PANEL, CONTROL, HIGH VACUUM UNIT	EA	1
3	8	PAHZZ	6625-451-8272	267965	65092	AMMETER	EA	1
3	9	PAHZZ	5325-543-4450	NAS557-16C	80205	GROMMET, PLASTIC	EA	1
3	10	PAHZZ	6625-449-8077	267967	65092	AMMETER	EA	1
3	11	PAOZZ	5355-985-6888	MS91528-2M2B	96906	KNOB, CONTROL	EA	1
3	12	PAHZZ	6625-137-5879	267966	65092	AMMETER	EA	1
3	13	PAOZZ	5355-616-7669	MS91528-2D2B	96906	KNOB, CONTROL	EA	3
3	14	PAHZZ	5945-496-5199	65E22-501-0013	24727	RELAY	EA	1
3	15	PAHZZ	4945-509-2631	MS27400-1	96906	RELAY, ARMATURE	EA	1
3	16	PAHZZ	5945-690-1144	MS27416-18	96906	RELAY, 30 AMP	EA	1
3	17	PAHZZ	5325-603-6232	NAS557-40	80205	GROMMET, PLASTIC	EA	1
3	18	PAHZZ	5950-493-9396	643237-1	96914	TRANSMISSION, POWER	EA	1
3	19	PAHZZ	5905-05909662	NV498YSD764A	81349	RESISTOR, VARIABLE	EA	1
3	20	PAOZZ	6240-159-7636	MS25237-327	96906	LAMP, INCANDESCENT	EA	11

1082-10 011-11



EL6625-2446-40P-TM-1

Figure 1. Test Set, Cryogenic Refrigerator AN/AAM-40.



NOTE: PREFIX ALL REFERENCE DESIGNATORS WITH 1.

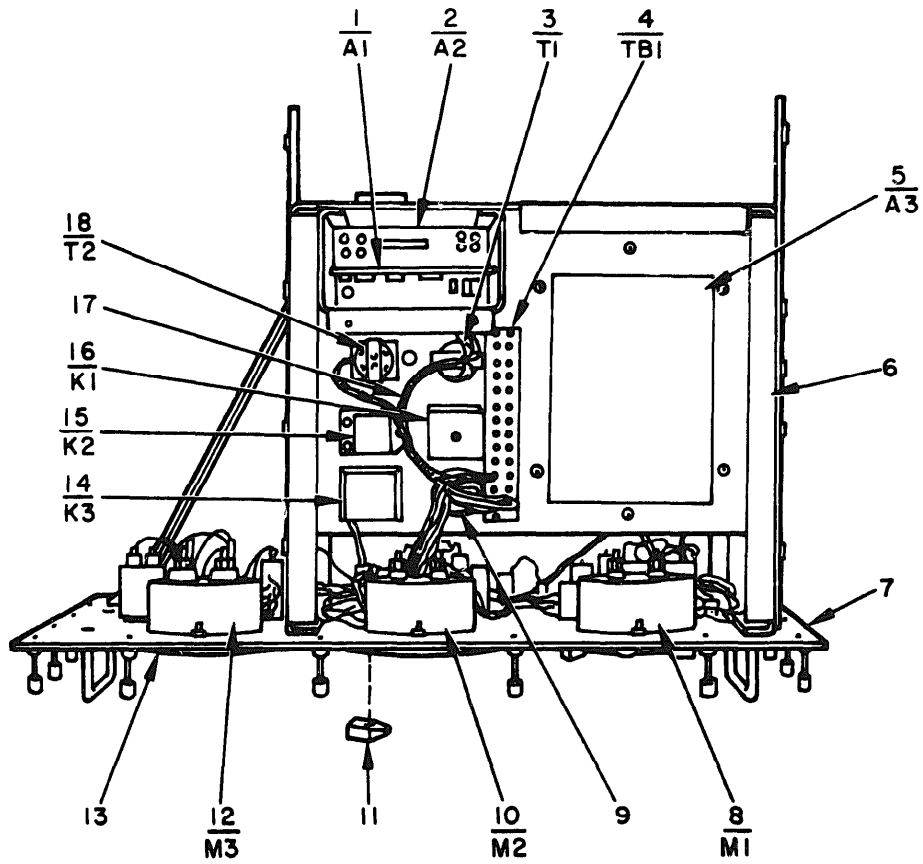
EL 6625-2446-40P-TM-2

Figure 2. Pump Group, Vacuum OA-6590/AAM-40



SECTION II REPAIR PARTS LIST (CONTINUED)

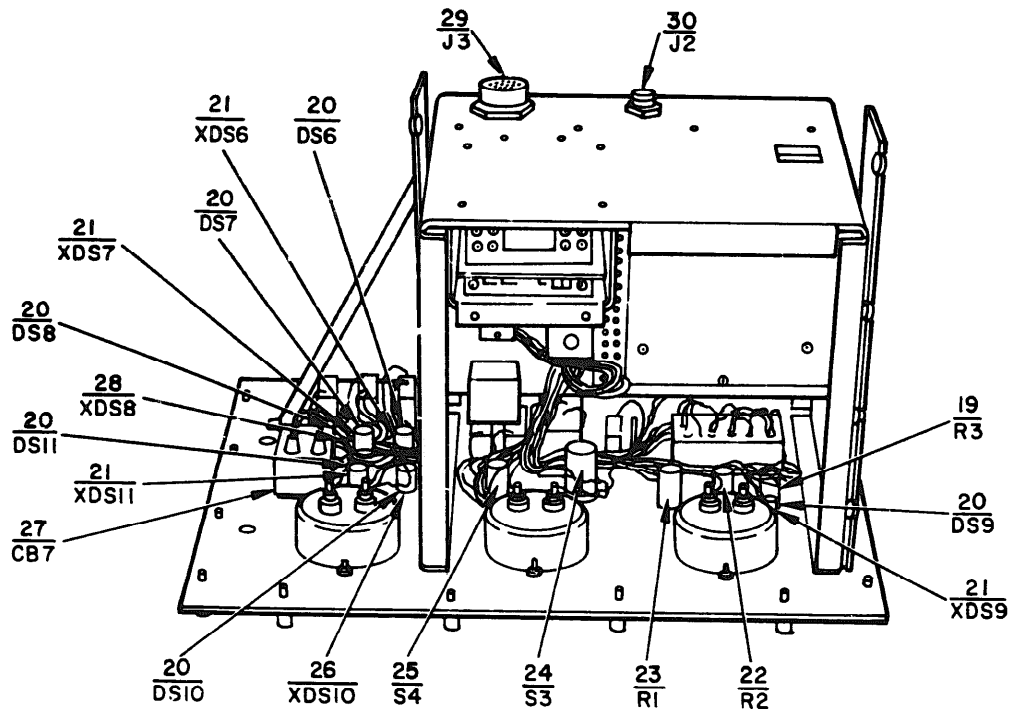
(1) ILLUSTRATION		(2) SMR CODE	(3) FEDERAL STOCK NUMBER	(4) PART NUMBER	(5) FSCM	(6) DESCRIPTION	(7) UNIT OF MEAS	(8) QTY INC IN UNIT
(A) FIG NO.	(B) ITEM NO.					USABLE ON CODE		
3	21	PAHZZ	62210-482-3870	08-83283-81	87034	LAMPHOLDER	EA	5
3	22	PAHZZ		533778-8	96214	RESISTOR, VARIABLE	EA	1
3	23	PAHZZ		3500S819-103	80294	RESISTOR, VARIABLE	EA	1
3	24	PAHZZ	5930-410-7783	418633-30	96214	SWITCH, ROTARY	EA	1
3	25	PAHZZ	5930-465-4349	418633-6	96214	SWITCH, ROTARY	EA	1
3	26	PAHZZ		08-83283-82	87034	LAMPHOLDER	EA	2
3	27	PAHZZ	5925-762-2258	M39019-5-60	81349	CIRCUIT BREAKER	EA	1
3	28	PAHZZ	6210-482-3872	08-83283-83	87034	LAMPHOLDER	EA	3
3	29	PAHZZ	5935-902-8865	MS3124522-21S	96906	CONNECTOR, RECEPTACLE, ELECTRICAL	EA	1
3	30	PAHZZ		MS3124E12-10PZ	96906	CONNECTOR RECEPTACLE, ELECTRICAL	EA	1
3	31	PAHZZ	5961-229-7675	1N4990	81349	SEMICONDUCTOR DEVICE, DIODE	EA	6
3	32	PAHZZ	5925-078-7466	M39019-1-60	81349	CIRCUIT BREAKER	EA	3
3	33	PAHZZ	6210-945-7605	M0832-84	87034	LAMPHOLDER	EA	1
3	34	PAHZZ	5935-432-6535	KV79-18	91836	CONNECTOR, RECEPTACLE, ELECTRICAL	EA	1
3	35	AHDD		694659-1	96214	HARNESS, ASSEMBLY, INTERNAL	EA	1
3	36	XAHZZ	5935-432-6534	692630-1	96214	CONNECTOR, PLUG, ELECTRICAL	EA	1
3	37	PAHZZ	5930-655-1582	MS35059-23	96906	SWITCH, TOGGLE	EA	1
3	38	PAHZZ	5925-137-4515	AP13-299-14	81541	CIRCUIT BREAKER	EA	1
3	39	PAHZZ	5935-731-0139	MS3126F12-10S	96906	CORRECTOR, PLUG, ELECTRICAL	EA	1
3	40	PAHZZ	6645-904-2754	MS17322-6A	96906	METER, TIME TOTALIZING	EA	1
3	41	PAHZZ	5925-700-5637	M39019-5-80	81349	CIRCUIT BREAKER	EA	1
3	42	PAHZZ	5925-118-1098	M39019-1-32	81349	CIRCUIT BREAKER	EA	1
						GROUP : 1A1A1 LEAK DETECTION ASSEMBLY		
4	1	PADZZ		CSR13G186KL	81349	CAPACITOR, FIXED, ELECTROLYTIC	EA	2
4	2	PADZZ	5910-490-0397	CMD5ED470J03	81349	CAPACITOR, FIXED, MICA DIELECTRIC	EA	1
4	3	PADZZ	5910-996-0532	CSR13D226KL	81349	CAPACITOR, FIXED, ELECTROLYTIC	EA	2
4	4	PADZZ	5910-460-0847	CKD6B104M	81349	CAPACITOR, FIXED, CERAMIC DIELECTRIC	EA	5
4	5	PAHZZ	5961-762-0201	UT4020	12969	SEMICONDUCTOR DEVICE, DIODE	EA	1
4	6	PAHZZ	5961-723-3602	1N3612	81349	SEMICONDUCTOR DEVICE, DIODE	EA	8
4	7	PADZZ	5961-833-3043	1N757A	81349	SEMICONDUCTOR DEVICE, DIODE	EA	2
4	8	XBDZZ	5961-951-5474	10105DAP	07047	INSULATOR, PLATE	EA	1
4	9	PADZZ	5961-054-0339	7715-19DAP	13103	INSULATOR, DISK	EA	1
4	10	PADZZ	5945-406-3076	EA1A124	35344	RELAY, ARMATURE	EA	1
4	11	PADZZ		UPO0SGM23AADM	97954	CONNECTOR, RECEPTACLE, ELECTRICAL	EA	1
4	12	PADZZ	5905-062-5039	RN65D1211F	81349	RESISTOR, FIXED, FILM	EA	1
4	13	PADZZ	5905-081-6381	RN65D6191F	81349	RESISTOR, FIXED, FILM	EA	1
4	14	PADZZ	5905-883-8433	RN65D2211F	81349	RESISTOR, FIXED, FILM	EA	1
4	15	PADZZ	5905-988-2307	RN60D1003F	81349	RESISTOR, FIXED, FILM	EA	2
4	16	PADZZ	5905-062-0152	RN60D8252F	81349	RESISTOR, FIXED, FILM	EA	1
4	17	PADZZ	5905-060-2470	RN60D1004F	81349	RESISTOR, FIXED, FILM	EA	1
4	18	PADZZ	5905-043-0391	RN60D2211F	81349	RESISTOR, FIXED, FILM	EA	1
4	19	PADZZ	5905-763-6653	RN60D75R0F	81349	RESISTOR, FIXED, FILM	EA	1
4	20	PADZZ	5905-078-7777	RN60D2741F	81349	RESISTOR, FIXED, FILM	EA	1



NOTE: PREFIX ALL REFERENCE DESIGNATORS WITH 1A1.

EL 6625-2446-40P-TM-3 ①

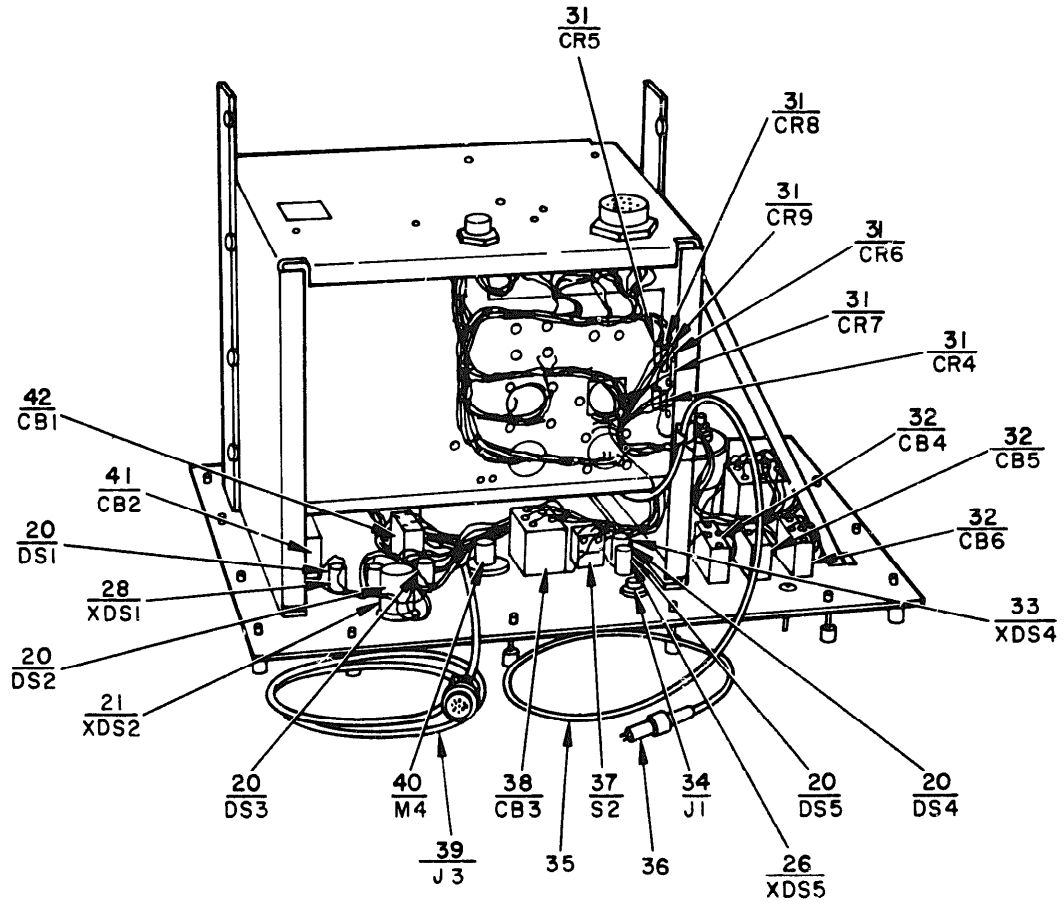
Figure 3.① Power Supply PP-6527/AAM-40 (Sheet 1 of 3)



NOTE: PREFIX ALL REFERENCE DESIGNATORS WITH 1A1.

EL6625-2446-40P-TM-3 ②

Figure 3. ② Power Supply PP-6527/AAM-40 (Sheet 2 of 3).

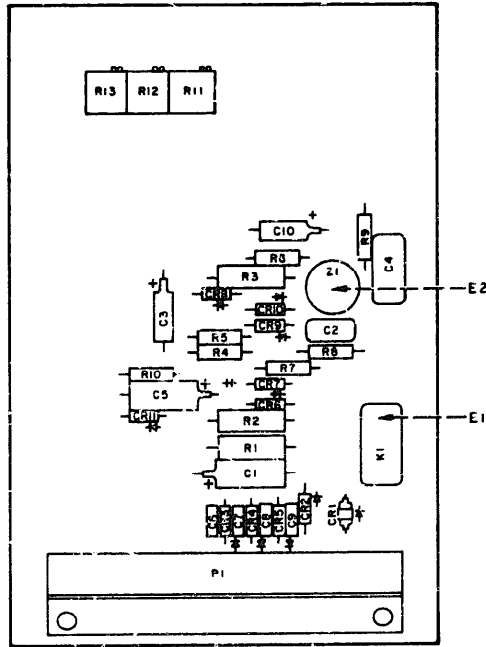


NOTE: PREFIX ALL REFERENCE DESIGNATORS WITH 1A1.

EL6625-2446-40P-TM-3 ③

Figure 3. ③ Power Supply PP-6627/AAM-40 (Sheet 3 of 3).

(1) ILLUSTRATION		(2) SMR CODE	(3) FEDERAL STOCK NUMBER	(4) PART NUMBER	(5) FSCM	(6) DESCRIPTION	(7) UNIT OF MEAS	(8) QTY INC IN UNIT
(A) FIG NO.	(B) ITEM NO.					USABLE ON CODE		
4	21	PADZZ	5905-402-4027	RT24C2P100	31349	RESISTOR, VARIABLE	EA	1
4	22	PADZZ	5905-177-7369	RT24C2P101	31349	RESISTOR, VARIABLE	EA	1
4	23	PADZZ	5905-998-9232	RT24C2P501	31349	RESISTOR, VARIABLE	EA	1
4	24	PADZZ	5962-861-3220	SN52709L	01295	INTEGRATED CIRCUIT, OPERATIONAL AMPLIFIER  GROUP: 1A1A2 HIGH VACUUM UNIT, CRYOGENIC	EA	1
5	1	PADZZ	5910-189-3681	LP9A1E154J	01884	CAPACITOR, FIXED, PLASTIC DIELECTRIC	EA	6
5	2	PADZZ	5910-822-5683	CK63AW103W	31349	CAPACITOR, FIXED, CERAMIC DIELECTRIC	EA	4
5	3	PADZZ	5961-847-5508	1N30248	31349	SEMICONDUCTOR DEVICE, DIODE	EA	2
5	4	PAHZZ	5961-723-3602	1N3612	31349	SEMICONDUCTOR DEVICE, DIODE	EA	4
5	5	PADZZ		UP00SGV23AAEP	97954	CONNECTOR, RECEPTACLE, ELECTRICAL	EA	1
5	6	PADZZ	5950-767-6832	FJ42S1O3J	31349	RESISTOR, FIXED, FILM	EA	1
5	7	PADZZ	5905-402-4027	RT24C2P100	31349	RESISTOR, VARIABLE	EA	1
5	8	PADZZ		RW70U2R67F	31349	RESISTOR, FIXED, WIREWOUND  GROUP: 1A1A3 POWER SUPPLY, HIGH VOLTAGE	EA	2
6	1	PAJZZ	5950-481-3086	692070-1	96214	TRANSFORMER	EA	1
6	2	PADZZ	5961-190-6084	652-612	12969	SEMICONDUCTOR DEVICE, DIODE	EA	1
6	3	PADZZ	5910-137-4427	CMRLA502144K	31349	CAPACITOR, FIXED, MICA DIELECTRIC	EA	1
6	4	PADZZ		RT24C2P103	31349	RESISTOR, VARIABLE	EA	1
6	5	PAHZZ	5935-432-6535	KV79-18	91836	CONNECTOR, RECEPTACLE, ELECTRICAL	EA	2
6	6	PADZZ	5945-182-2869	HC1S30	18741	RELAY	EA	2
6	7	PADZZ		533120-18	96214	RESISTOR, FIXED, FILM	EA	2
6	8	PADZZ	5940-409-8275	SE209D02	31349	TERMINAL, STUD	EA	8
6	9	PAHZZ	5935-902-2344	MS3124E12-10P	96906	CONNECTOR, RECEPTACLE, ELECTRICAL	EA	1
6	10	PADZZ	5905-412-3719	533120-23	96214	RESISTOR, FIXED, FILM	EA	1
6	11	PAJZZ	5905-969-5851	416448-3151	96214	RESISTOR  GROUP: 1A2 FILTER ASSEMBLY	EA	1
7	1	PAHZZ	5950-433-2451	692033-1	96214	INDUCTOR, POWER	EA	7
7	2	PAHZZ	5910-850-0552	CH09A1NC225K	31349	CAPACITOR, FIXED, PAPER DIELECTRIC	EA	1
7	3	PAHZZ	5910-926-0061	418397-51	96214	CAPACITOR, FIXED, PAPER DIELECTRIC	EA	3
7	4	PAHZZ	5935-356-3141	MS3126F12-10SZ	96906	CONNECTOR, PLUG, ELECTRICAL	EA	1
7	5	PAHZZ	5935-838-3695	MS3124E12-3P	96906	CONNECTOR, RECEPTACLE, ELECTRICAL	EA	1
7	6	PAHZZ	5935-880-8896	MS3124E14-5P	96906	CONNECTOR, RECEPTACLE, ELECTRICAL	EA	1
7	7	PAHZZ	5905-850-1982	RN65C1004F	31349	RESISTOR, FIXED, FILM	EA	4
7	8	PAHZZ	5915-127-4305	9013-000-1002	72982	FILTER, ELECTROMAGNETIC	EA	2
7	9	PAHZZ	5915-990-1409	5JX94	56289	FILTER, ELECTROMAGNETIC  GROUP: 1MP13 ASSEMBLY, VACUUM PUMP MD-88P/AAM-40	EA	4
8	1	PAHZZ	5940-983-6115	21002	75382	TERMINAL BOARD	EA	1
8	2	PAHZZ	5940-168-3382	B2B1	98410	SPLICE	EA	2
8	3	PAHZZ	6105-234-3352	294UH4R169	00462	MOTOR WITH GEAR BOY	EA	1
8	4	XAHZZ		294UH4	00462	MOTOR	EA	1
8	5	XAHZZ		R169	00462	GEARBOX	EA	1



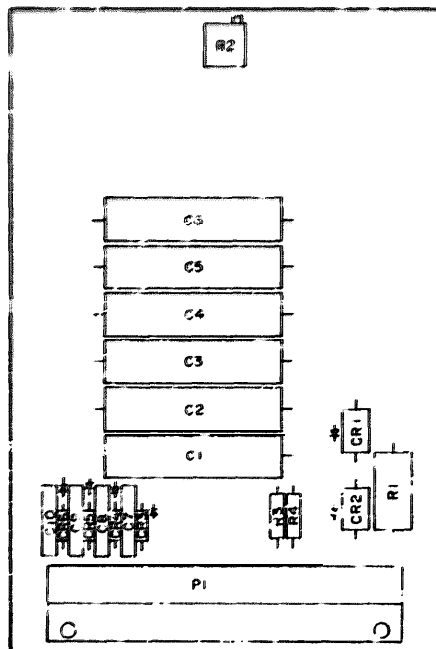
NOTES.

1. PREFIX ALL REFERENCE DESIGNATORS WITH IAIAI.
2. E1 LOCATED UNDER K1.
3. E2 LOCATED UNDER Z1.

REF. DES.	ITEM NO.	REF. DES.	ITEM NO.	REF. DES.	ITEM NO.
C1	1	CR4	6	R2	13
C2	2	CR5	6	R3	14
C3	3	CR6	7	R4	15
C4	4	CR7	7	R5	15
C5	1	CR8	6	R6	16
C6	4	CR9	6	R7	17
C7	4	CR10	6	R8	18
C8	4	CR11	6	R9	19
C9	4	E1	8	R10	20
C10	3	E2	9	R11	21
CR1	5	K1	10	R12	22
CR2	6	P1	11	R13	23
CR3	6	R1	12	Z1	24

EL6625-2446-40P-TM-4

Figure 4. Leak detection assembly.

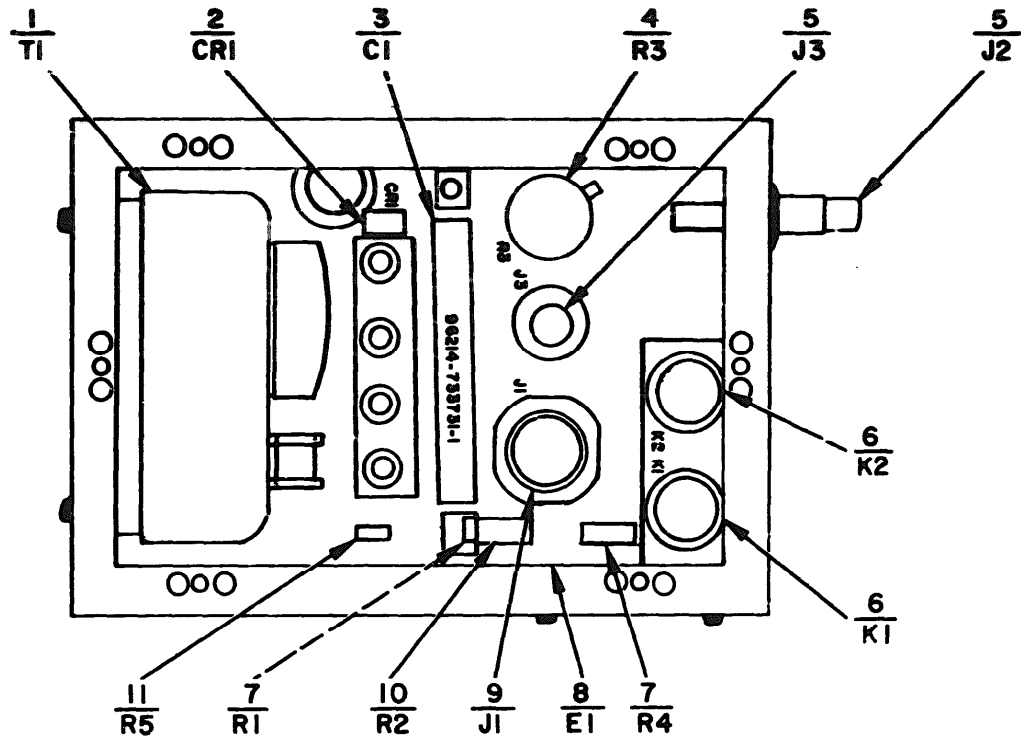


NOTE: PREFIX ALL REFERENCE DESIGNATORS WITH 1A1A2

REF DES	ITEM NO	REF DES	ITEM NO	REF DES	ITEM NO
C1	1	C8	2	CR5	4
C2	1	C9	2	CR6	4
C3	1	C10	2	P1	5
C4	1	CR1	3	R1	6
C5	1	CR2	3	R2	7
C6	1	CR3	4	R3	8
C7	2	CR4	4	R4	8

EL6625-2446-40P-TM-5

Figure 5. High vacuum unit, cryogenic.

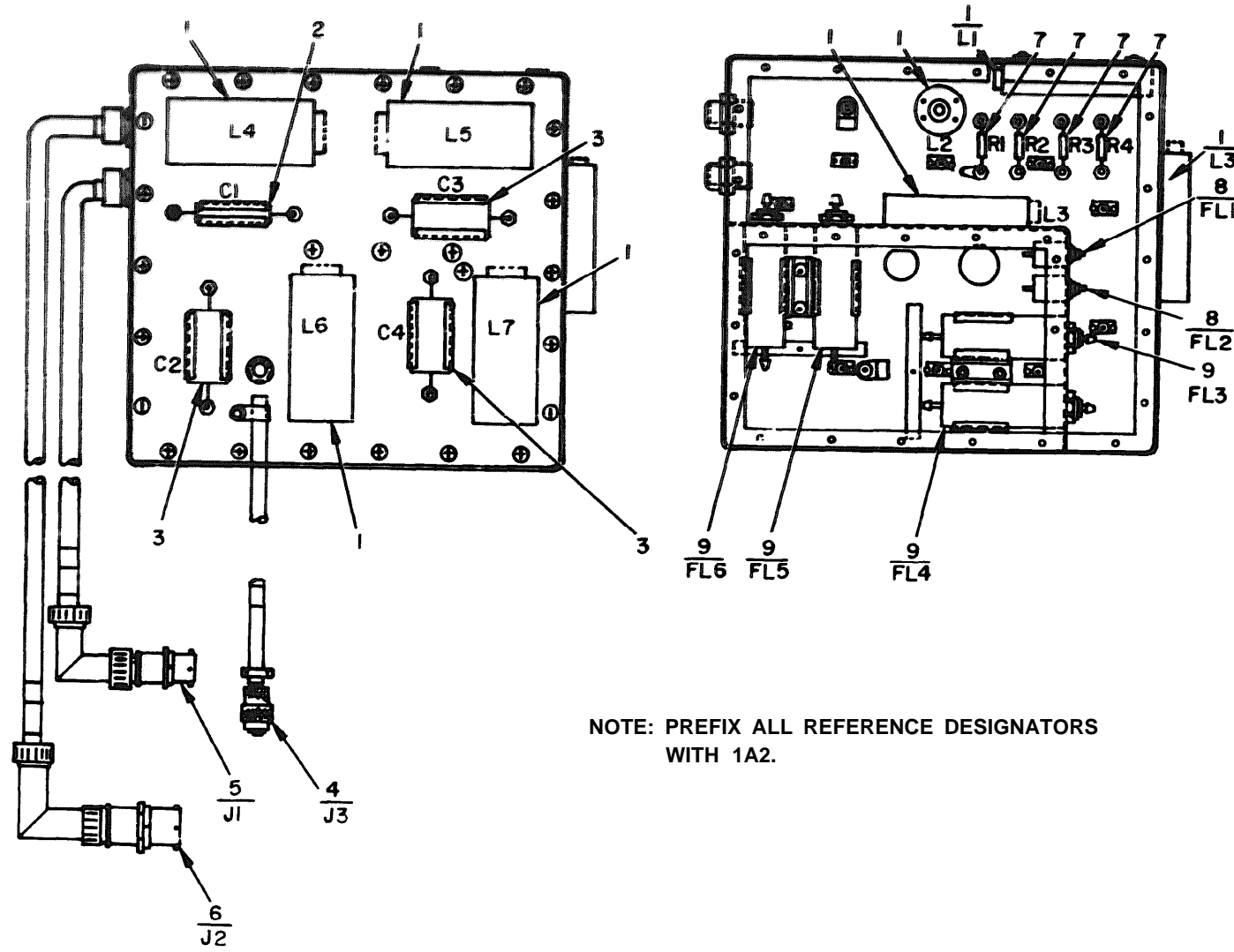


NOTE: PREFIX ALL REFERENCE DESIGNATORS WITH 1A1A3.

E L 6 6 2 5 - 2 4 4 6 - 4 0 P - T M - 6

Figure 6. Power supply, high voltage.





EL6625-2446-40P-TM-7

Figure 7. Filter assembly.

## SECTION II REPAIR PARTS LIST (CONTINUED)

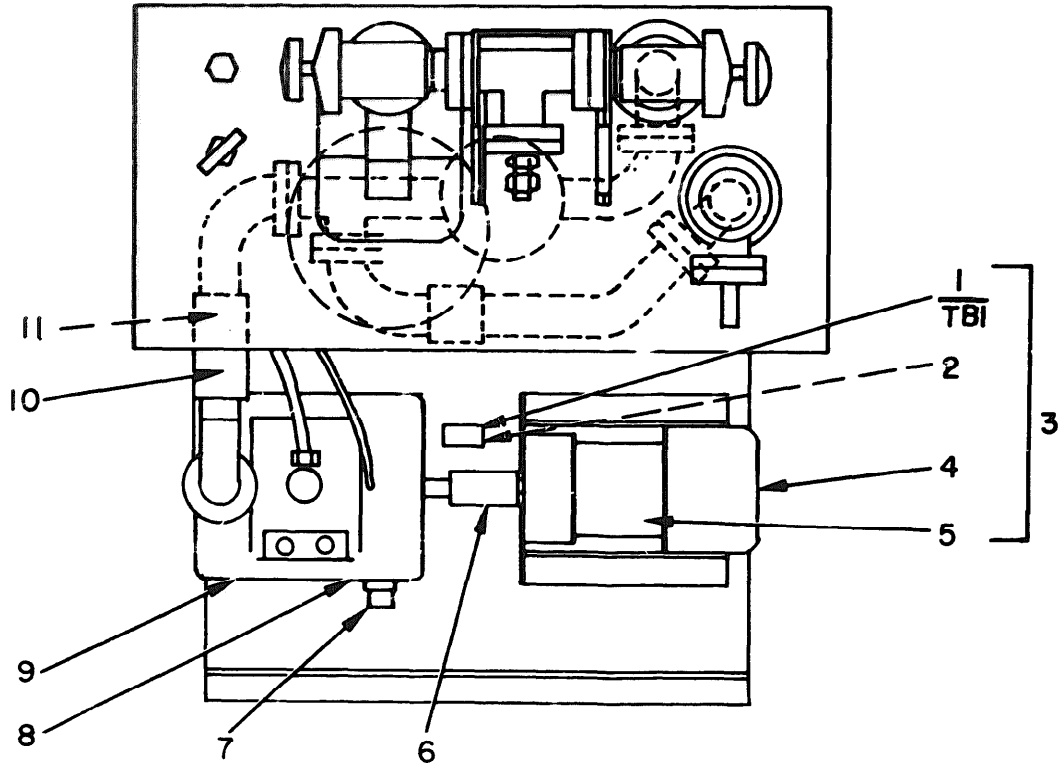
TM 11-6625-2446-40P

(1) ILLUSTRATION		(2) SNR CODE	(3) FEDERAL STOCK NUMBER	(4) PART NUMBER	(5) FSCM	(6) DESCRIPTION	(7) UNIT OF MEAS	(8) QTY INC IN UNIT
(A) FIG NO	(B) ITEM NO					USABLE ON CODE		
8	6	PAHZZ	4316-431-3006	20R15-1-2-1-9	71041	COUPLING	EA	1
8	7	PAHZZ	4325-474-9483	121049-1-404	96906	CONNECTOR, RECEPTACLE	EA	1
8	8	PAHZZ	4310-481-3019	12108E-12-30	96906	CONNECTOR, RECEPTACLE	EA	1
8	9	PAHZZ	4320-230-3737	097794-003-0	14937	PUMP WITH HEATER	EA	1
8	10	PAHZZ	4330-481-7624	502-2	39081	FILTER	EA	1
8	11	PAHZZ	4316-431-3006	ADP1	31408	PLUG, FILTER	EA	1
8	12	PAHZZ	4325-474-9483	D500-366-000	14937	VALVE	EA	2
8	13	PAHZZ	4320-230-3737	097794-004-0	07680	THERMOCOUPLE GAUGE TUBE	EA	1
8	14	PAHZZ	4320-230-3737	B97794-022-0	14937	TEE WITH HEATER	EA	1
8	15	PAHZZ	5915-317-6095	MS3124F14-5PY	96906	CONNECTOR, RECEPTACLE	EA	1
8	16	PAHZZ	4529-455-3585	D500-366-030	14937	VALVE, ANGLE, SCREW TYPE	EA	1
8	17	PAHZZ	4820-472-4479	B97794-011-0	14937	VALVE	EA	1
8	18	PAHZZ	5935-938-7376	MS3126F14-5PY	96906	CONNECTOR, RECEPTACLE	EA	1
8	19	PAHZZ	4310-481-3019	600-1-4-316	02570	CONNECTOR, MALE BULKHEAD	EA	1
8	20	PAHZZ	4730-481-3019	600-11-4-316	02570	CONNECTOR, MALE BULKHEAD	EA	1
8	21	PAHZZ	4710-480-7624	097794-004-0	14937	LINE, VALVE, MAINROUGH	EA	1
8	22	PAHZZ	4730-481-3019	120-874-000	14937	PUMP	EA	1
8	23	PAHZZ	4736-430-7622	D97794-007-0	11649	TRAP, FORELINE	EA	1
8	24	PAHZZ	4720-493-9258	B97794-003-0	14937	COUPLING, FLEXIBLE	EA	1
8	25	PAHZZ	4820-451-3016	D500-368-000	14937	POPPET-SPINDLE ASSEMBLY	EA	1
8	26	PAHZZ	5935-938-7376	MS3122E14-5PY	96906	CONNECTOR, RECEPTACLE	EA	1
8	27	PAHZZ	5936-451-8286	184-085-000	14937	THERMOSTAT	EA	1
8	28	PAHZZ	5930-168-7942	184-084-000	14937	THERMOSTAT	EA	1
8	29	PAHZZ	4820-425-6058	SS4P4E	18034	VALVE, BALLAST	EA	1
8	30	PAHZZ	4810-152-1573	LB8210C95VH	04845	VALVE, SOLENOID	EA	2
8	31	PAHZZ	4720-493-9259	B97794-001-0	14937	COUPLING, FLEXIBLE	EA	1
8	32	PAHZZ	4730-771-5346	A97794-500-0	14937	INSERT, PLASTIC TUBE	EA	4
8	33	PAHZZ	5935-432-6535	KV79-18	14937	CONNECTOR, HIGH VOLTAGE	EA	2
8	34	PAHZZ	4310-230-3736	201SD-1	14937	PUMP	EA	1
8	35	PAHZZ	5330-451-2922	A500-002-000	14937	GASKET	EA	1
8	36	XBHZZ	5310-158-6868	500-001-000	14937	GASKET	EA	11
8	37	PAHZZ	4730-232-6360	4ST316	11649	TEE, STREET, INLET	EA	1
8	38	PAHZZ	4730-230-3741	B97794-007-0	14937	COUPLING, INLET	EA	1
8	39	PAHZZ	4710-480-7626	097794-005-0	14937	LINE, VALVE, AUX ROUGH	EA	1
8	40	PAHZZ	4810-480-7626	097794-010-0	14937	VALVE ASSEMBLY, SOLENOID, INLET	EA	1
8	41	PAHZZ	4810-480-7623	LB8462C91VH	04845	VALVE, SOLENOID, VENT	EA	1
8	42	PAHZZ	4730-455-1579	B97794-016-0	14937	COUPLING, VALVE, SOLENOID	EA	1
8	43	PAHZZ	4730-230-3738	B600-136-00F	14937	FLANGE, COUBLE FACED	EA	1
8	44	XBHZZ	5340-797-4026	L64AA40	04665	MOUNT, SHOCK	EA	6
8	45	XAHZZ	5935-938-7376	MS3124F12-3P	96906	CONNECTOR, RECEPTACLE	EA	1
8	46	PAHZZ	5935-636-5145	MS3108E16S1S	96906	CONNECTOR, RECEPTACLE	EA	1
8	47	PAHZZ	4730-417-3077	12RB4-316	11649	BUSHING, REDUCING	EA	1
8	48	PAHZZ	4730-043-3089	2HW316	11649	NIPPLE	EA	1

SECTION II REPAIR PARTS LIST (CONTINUED)

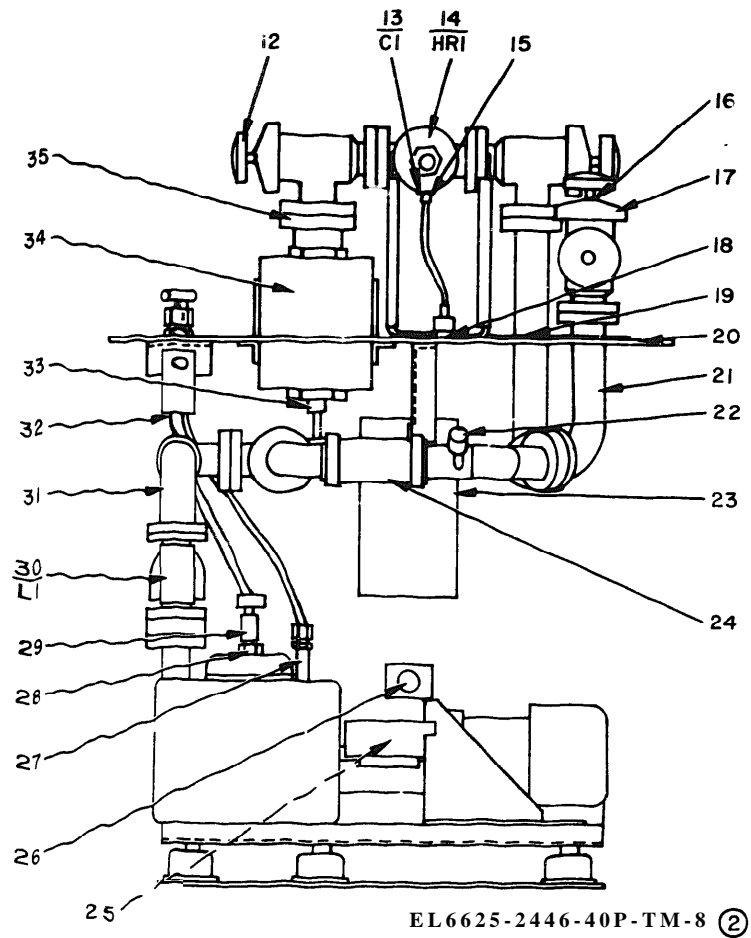
(1) ILLUSTRATION		(2) SMR CODE	(3) FEDERAL STOCK NUMBER	(4) PART NUMBER	(5) FSCN	(6) DESCRIPTION	(7) UNIT OF MEAS	(8) QTY INC IN UNIT
(A) FIG NO.	(B) ITEM NO.							
8	49	PAHZZ		1VS6A316WITHRAR-HANDLE	12623	VALVE, EXHAUST	EA	1
8	50	PAHZZ	5330-137-5970	120-809-00	14937	PACKING, PREFORMED	EA	1
8	51	PAHZZ	4730-481-3018	B97794-014-0	14937	CONNECTOR, HOSE	EA	1
8	52	PAHZZ	4730-684-4065	400-1-2-316	02570	CONNECTOR, MULE BULKHEAD	EA	1
8	53	PAHZZ	4820-710-0267	DS3DT2MD1	91816	VALVE, RELIEF	EA	1
						GROUP: 2 TEST SET, CONTROL GROUP OK-155/AAM-40		
9	1	PAOHD	6625-196-2844	692144-2	96214	CABLE ASSEMBLY, POWER ELECTRICAL CX12406/U	EA	1
9	2	XAHZZ	5935-503-5283	33-106	72653	PROBE, TEST	EA	2
9	3	XAHZZ		33-108	72653	PROBE, TEST	EA	2
9	4	XBHZZ	5935-765-5991	BMS3126F12-3S	96906	CONNECTOR, PLUG, ELECTRICAL	EA	1
9	5	PAOHD	6625-470-4315	692145-2	96214	CABLE ASSEMBLY, POWER, ELECTRICAL CX12409/U	EA	1
9	6	PAHZZ	5935-843-7133	IUP106M	81349	CONNECTOR, PLUG, ELECTRICAL	EA	1
9	7	PAHZZ	5935-761-3885	BMS3126F14-5S	96906	CONNECTOR, PLUG, ELECTRICAL	EA	1
9	8	PAOHD	4130-403-5821	692224-2	96214	CABLE ASSEMBLY, SPECIAL PURPOSE, ELECTRICAL CX12474/AAM-40	EA	1
9	9	PAHZZ	5935-988-9656	BMS3126F12-10P	96906	CONNECTOR, PLUG, ELECTRICAL	EA	1
9	10	PAHZZ	5935-731-0139	BMS3126F12-10S	96906	CONNECTOR, PLUG, ELECTRICAL	EA	1
9	11	PAOHD	4130-403-5822	692223-2	96214	CABLE ASSEMBLY, SPECIAL PURPOSE, ELECTRICAL CX12475/AAM-40	EA	1
9	12	PAHZZ	5935-823-0487	BMS35168-88E	96906	CONNECTOR, PLUG, ELECTRICAL	EA	2
9	13	PAOHD	4130-433-2338	692222-2	96214	CABLE ASSEMBLY, SPECIAL PURPOSE, ELECTRICAL CX12477/AAM-40	EA	1
9	14	PAHZZ	5935-779-5140	BMS3126F14-15P	96906	CONNECTOR, PLUG, ELECTRICAL	EA	1
9	15	PAHZZ	5935-903-2439	BMS3126F14-15S	96906	CONNECTOR, PLUG, ELECTRICAL	EA	1
9	16	PAOHD	4130-403-5824	692220-2	96214	CABLE ASSEMBLY, SPECIAL PURPOSE, ELECTRICAL CX12478/AAM-40	EA	1
9	17	PAHZZ	5935-715-2756	BMS3126F10-6S	96906	CONNECTOR, PLUG, ELECTRICAL	EA	1
9	18	PAHZZ	5935-724-7567	BMS3126F14-12P	96906	CONNECTOR, PLUG, ELECTRICAL	EA	1
9	19	PAOZZ	4130-433-2337	692219-2	96214	CABLE ASSEMBLY, SPECIAL PURPOSE, ELECTRICAL CX12479/AAM-40	EA	1
9	20	XAHZZ	5935-135-4072	IL22TF19P6N1	09922	CONNECTOR, PLUG, ELECTRICAL	EA	2
9	21	PAOZZ	4130-152-0890	692218-2	96214	CABLE ASSEMBLY, SPECIAL PURPOSE, ELECTRICAL CX12480/AAM-40	EA	1
9	22	PDODD	4130-197-6349	695831-1	96214	CONTROL, TEST SET 08895/AAM-40	EA	1
9	23	XBHZZ		695939-5	96214	CASE, SUBASSY, UNIT 2	EA	1
9	24	XBHZZ		695939-2	96214	CASE, SUBASSY, UNIT 1	EA	1
9	25	AHHDD		694737-1	96214	CONTROL PANEL ASSEMBLY, UNIT 2	EA	1
9	26	PDODD	4130-197-6337	696275-1	96214	COVER, CONTROL GROUP CX 116/AAM-40	EA	1
9	27	XBHZZ		695939-3	96214	CASE, SUBASSEMBLY, UNIT 2	EA	1
						GROUP: 2A1 PANEL ASSY, CONTROL, UNIT 2		
10	1	PAHZZ	5945-878-8522	BMS27400-2	96906	RELAY, ARMATURE	EA	1

11-6625-2446-40P



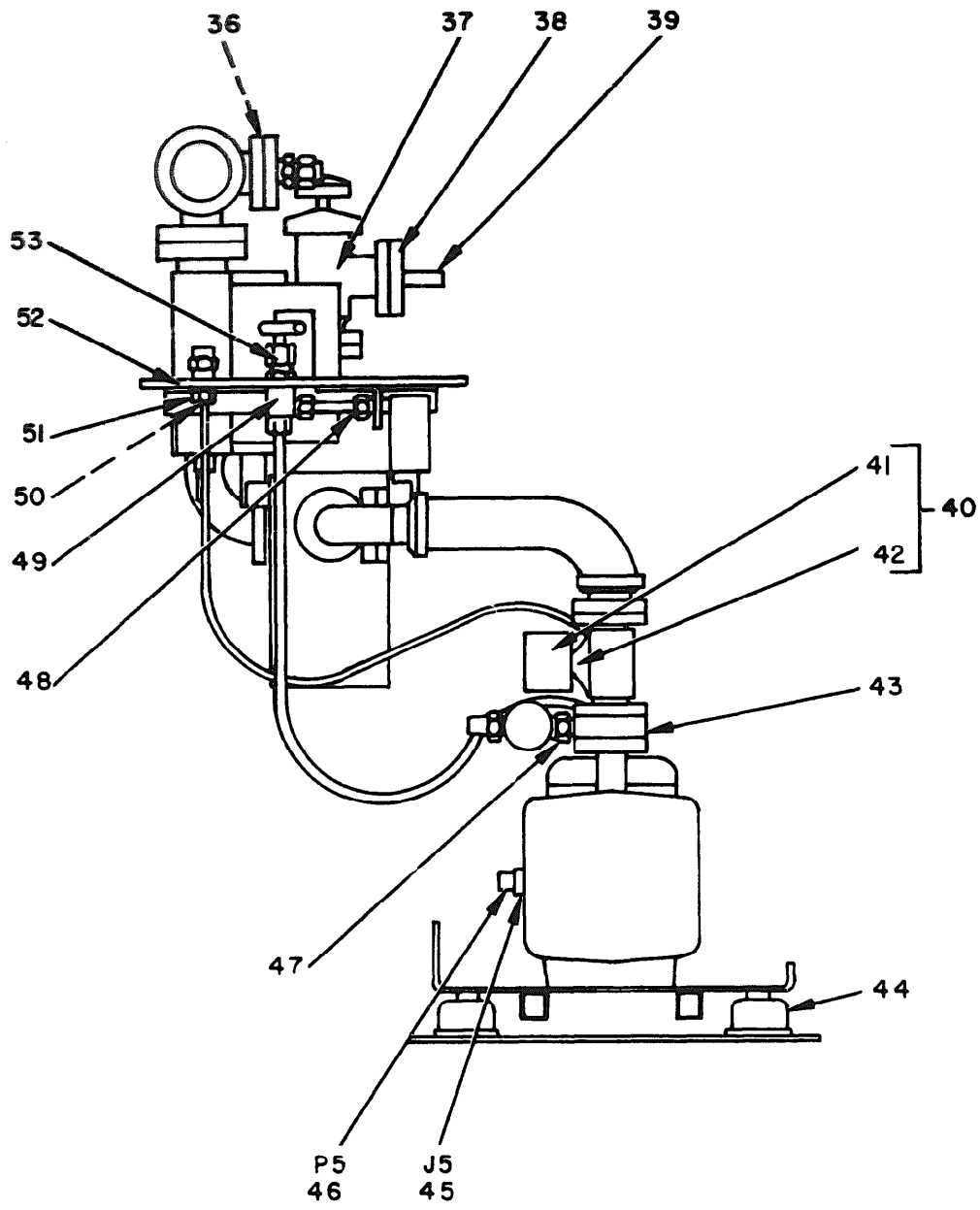
E L 6 6 2 5 - 2 4 4 6 - 4 0 P - T M - 8 ①

Figure 8. ① Assembly, Vacuum Pump HD-882/AAM-40 (Sheet 1 of 3).



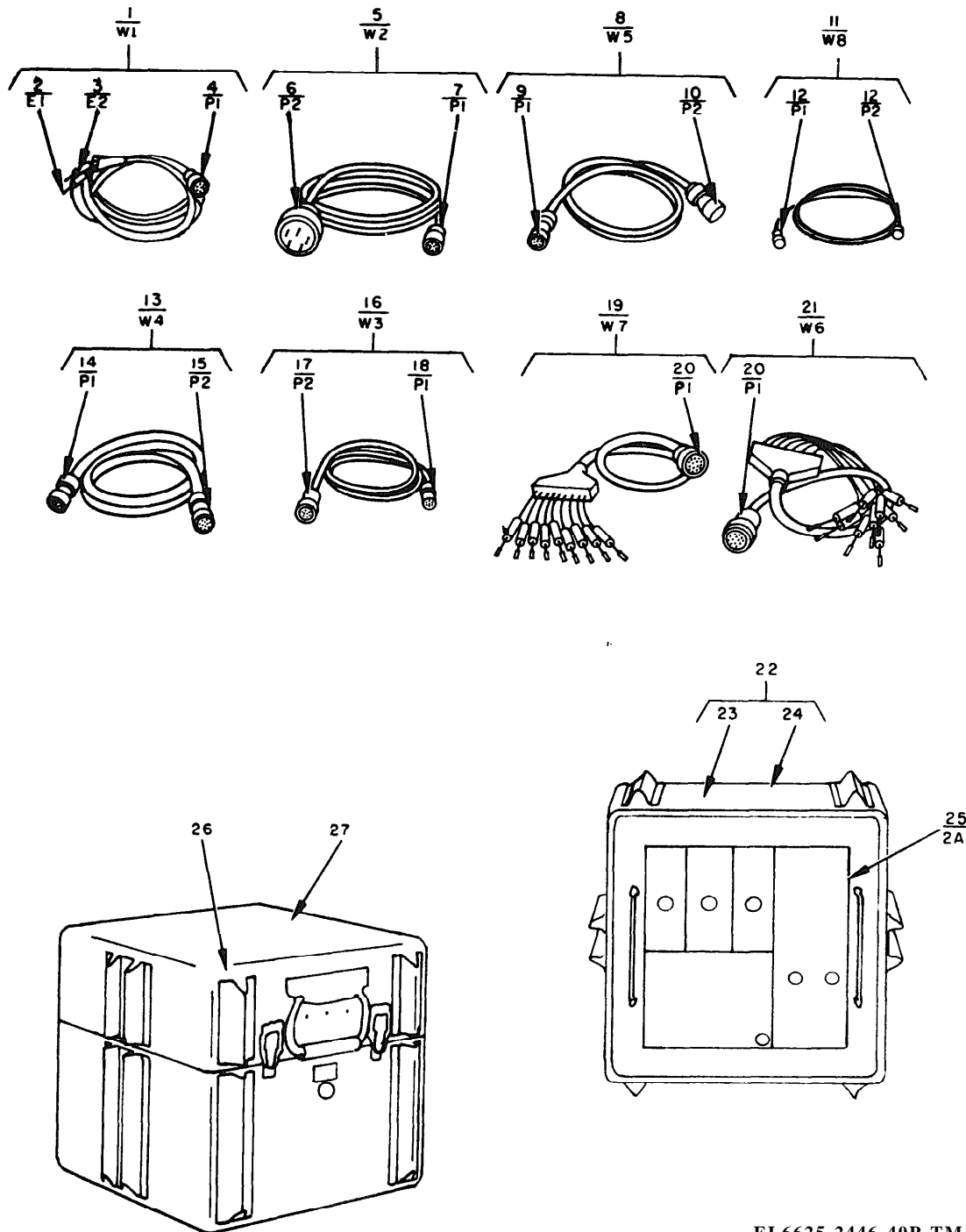
EL 6625-2446-40P-TM-8 (2)

Figure 8. (2) Assembly, Vacuum Pump HD-882/AAM-40 (Sheet 2 of 3).



EL 6625-2446-TM-40P-8 (3)

Figure 8. (3) Assembly, Vacuum Pump HD-882/AAM-40 (Sheet 3 of 3).



EL6625-2446-40P-TM-9

Figure 9. Test Set, Control Group OK-115/AAM-40.

SECTION II REPAIR PARTS LIST (CONTINUED)

TM 11-6625-2446-40P

(4) ILLUSTRATION		(2) SMR CODE	(3) FEDERAL STOCK NUMBER	(4) PART NUMBER	(5) FSCM	(6) DESCRIPTION	(7) UNIT OF MEAS	(8) QTY INC IN UNIT
(A) FIG NO	(B) ITEM NO							
10	2	FAH00	5901-100-1000	96214	FILTER ASSEMBLY, UNIT 2	EA	1	
10	3	FAH00	5901-100-1000	81349	SEMICONDUCTOR DEVICE, DIODE	EA	4	
10	4	FAH00	5901-100-1000	81073	SWITCH, ROTARY	EA	2	
10	5	FAH00	5901-100-1000	81349	CIRCUIT BREAKER	EA	1	
10	6	FAH00	5901-100-1000	87034	LAMPHOLDER	EA	1	
10	7	FAH00	5901-100-1000	96906	LAMP, INCANDESCANT	EA	9	
10	8	FAH00	5901-100-1000	87034	LAMPHOLDER	EA	6	
10	9	FAH00	5901-100-1000	87034	LAMPHOLDER	EA	4	
10	10	FAH00	5901-100-1000	81349	CIRCUIT BREAKER	EA	1	
10	11	FAH00	5901-100-1000	96906	SWITCH, TOGGLE	EA	2	
10	12	FAH00	5901-100-1000	96906	SWITCH, TOGGLE	EA	1	
10	13	FAH00	5901-100-1000	81349	TERMINAL BOARD	EA	2	
10	14	FAH00	5901-100-1000	71279	TERMINAL, STUD	EA	16	
10	15	FAH00	5901-100-1000	81349	SEMICONDUCTOR DEVICE, DIODE	EA	6	
10	16	FAH00	5901-100-1000	81349	SEMICONDUCTOR DEVICE, DIODE	EA	1	
10	17	FAH00	5901-100-1000	81349	SEMICONDUCTOR DEVICE, DIODE	EA	10	
10	18	FAH00	5901-100-1000	96906	CONNECTOR RECEPTACLE, ELECTRICAL	EA	1	
10	19	FAH00	5901-100-1000	96906	CONNECTOR RECEPTACLE, ELECTRICAL	EA	1	
10	20	FAH00	5901-100-1000	96214	METER, TIME TOTALIZING	EA	1	
10	21	FAH00	5901-100-1000	96214	TERMINAL BOARD	EA	1	
10	22	FAH00	5901-100-1000	81349	TERMINAL, STUD	EA	21	
GROUP: 2A1A1 FILTER ASSEMBLY, UNIT 2								
11	1	FAH00	5901-100-1000	72982	FILTER, EMI	EA	2	
11	2	FAH00	5901-100-1000	71279	TERMINAL, STUD	EA	2	
11	3	FAH00	5901-100-1000	81349	RESISTOR, FIXED, FILM	EA	4	
11	4	FAH00	5901-100-1000	80183	FILTER, RADIO INTERFERENCE	EA	4	
11	5	FAH00	5901-100-1000	96906	CLIP, SPRING TENSION	EA	4	
11	6	FAH00	5901-100-1000	96214	INDUCTOR, POWER	EA	3	
11	7	FAH00	5901-100-1000	81349	CAPACITOR, FIXED, METALLIZED	EA	2	
11	8	FAH00	5901-100-1000	96906	CONNECTOR, RECEPTACLE, ELECTRICAL	EA	1	
11	9	FAH00	5901-100-1000	96906	CONNECTOR, RECEPTACLE, ELECTRICAL	EA	1	
11	10	FAH00	5901-100-1000	96906	CLIP, SPRING TENSION	EA	1	
11	11	FAH00	5901-100-1000	80205	GROMMET, PLASTIC	EA	1	
11	12	FAH00	5901-100-1000	96214	INDUCTOR, POWER	EA	3	
11	13	FAH00	5901-100-1000	81349	TERMINAL, STUD	EA	2	
GROUP: 3 TEST SET, MAINTENANCE GROUP OQ-75/AAM-40								
12	1	PD000	4130-197-6362	692734-1	01295	TEST SET, CRYOGENIC REFRIGERATOR TS-3016/AAM-40	EA	1
12	2	PD000	5110-252-5742	609690-1	96214	MOUNT, PINCH-OFF TOOL MT-4313/AAM-40	EA	1
12	3	FAH00	5901-100-1000	0600-967-1500	70472	SPRING, HELICAL, COMPRESSION	EA	1
12	4	FAH00	5901-100-1000	633097-1	96214	TOOL, PINCH-OFF TL-770/AAM-40	EA	1
12	5	PD000	4130-197-6362	695940-1	01295	CASE, TEST SET MAINTENANCE GROUP CY-6945/AAM-40	EA	1



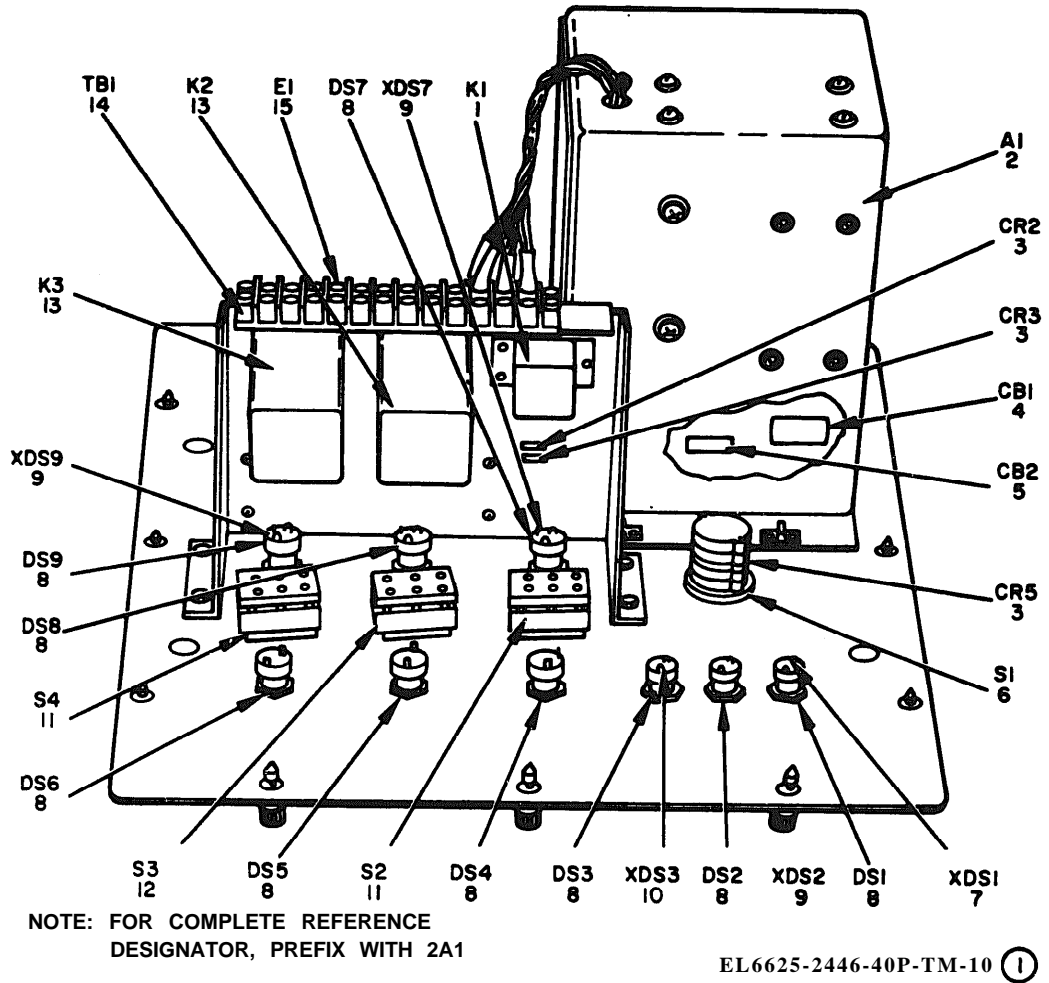
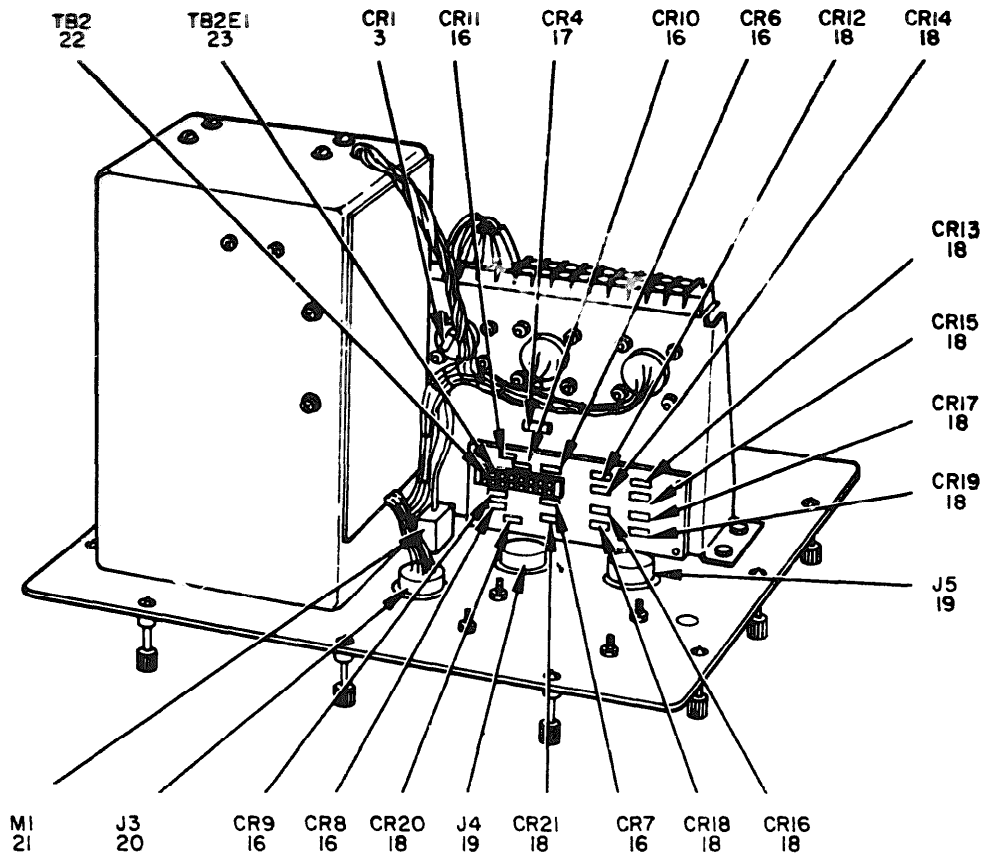


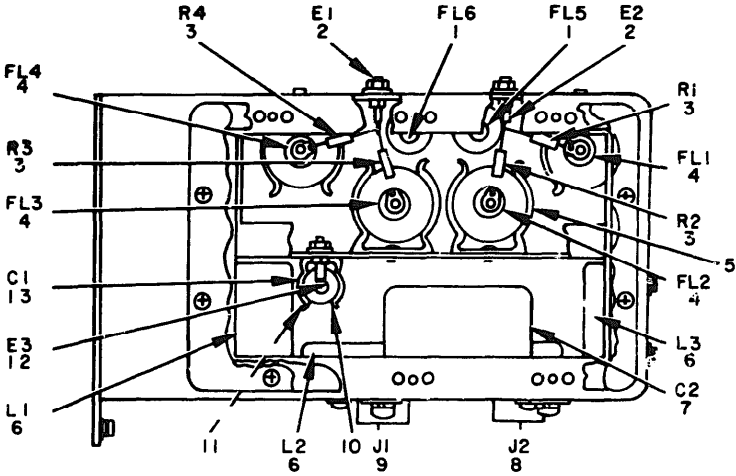
Figure 10. ① Panel assembly, control, unit 2 (Sheet 1 of 2).



NOTE: PREFIX ALL REFERENCE  
DESIGNATORS WITH 2A1.

EL6625-2446-40P-TM-10 ②

Figure 10. ② Panel, assembly, control, unit 2 (Sheet 2 of 2).



NOTE: PREFIX ALL REFERENCE DESIGNATORS WITH 2A1A1.

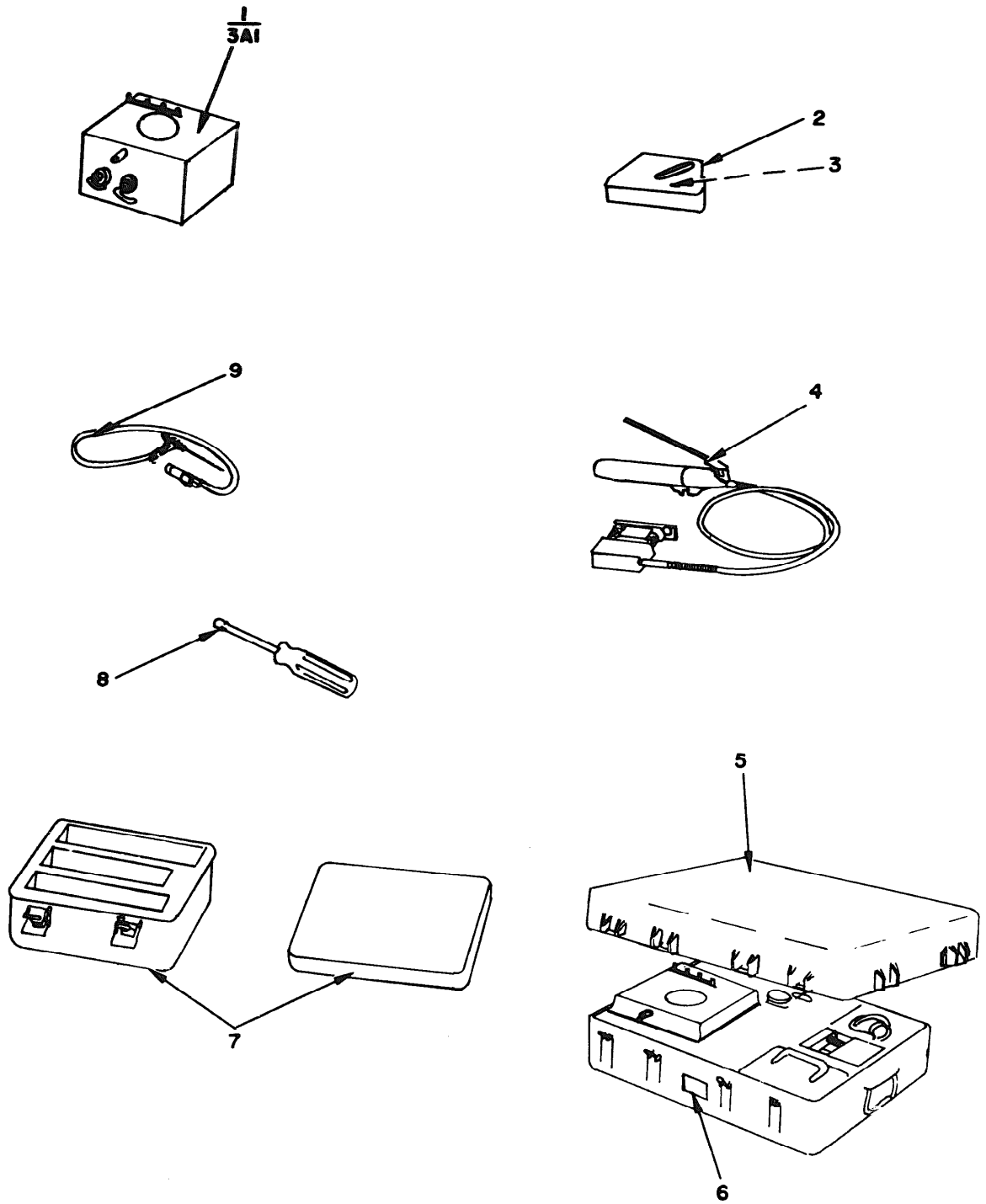
EL6625-2446-40P-TM-11

Figure 11. Filter assembly, unit 2.

## SECTION II REPAIR PARTS LIST (CONTINUED)

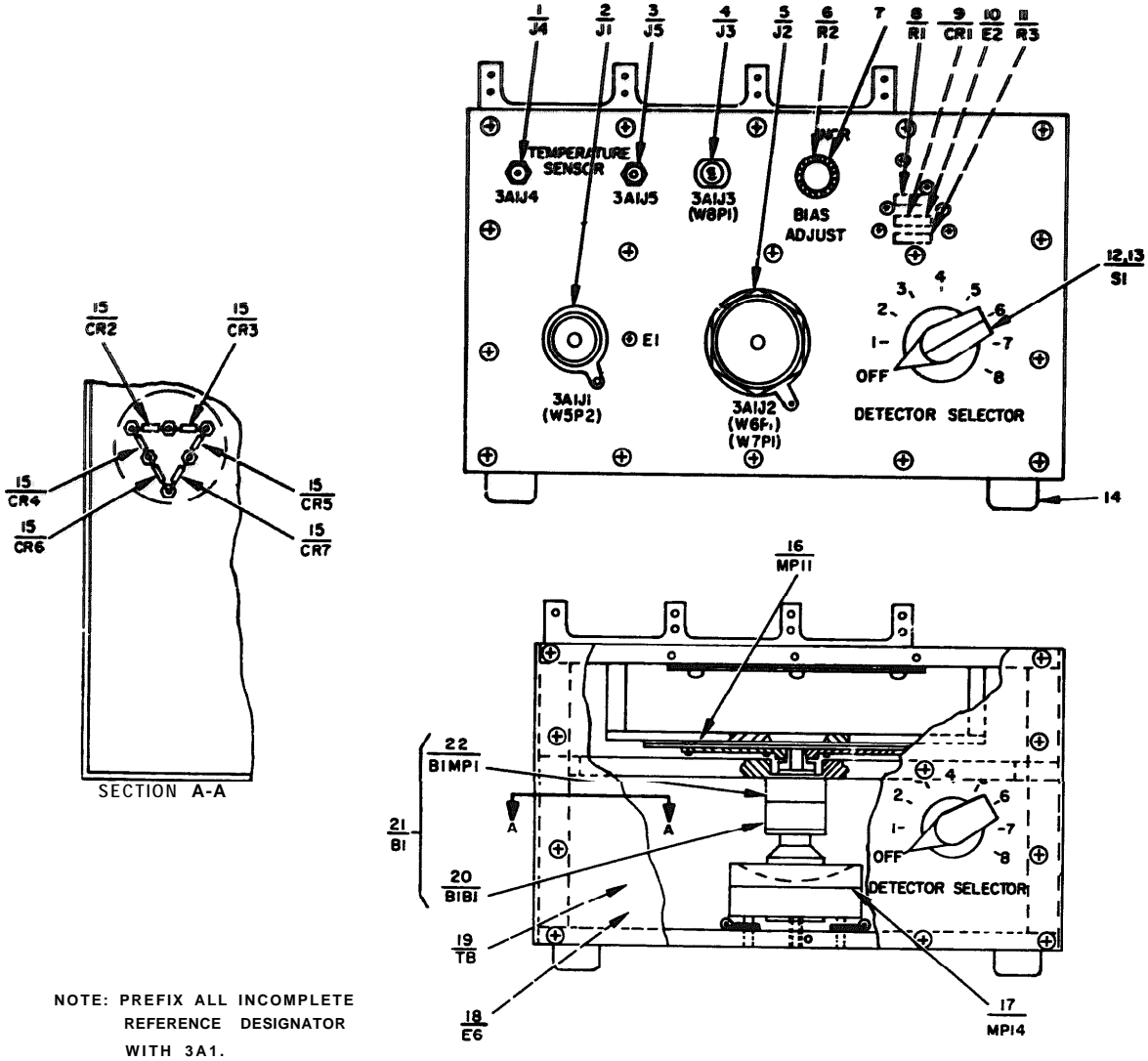
TM 11-6625-2446-40P

(1) ILLUSTRATION		(2) SYMBOL	(3) FEDERAL STOCK NUMBER	(4) PART NUMBER	(5) FSCM	(6) DESCRIPTION	(7) UNIT OF MEAS	(8) QTY INC IN UNIT
A FIG NO	B ITEM NO	CODE				USABLE ON CODE		
	4	ABWED		696010-1	96214	PLATE, IDENTIFICATION	EA	1
	7	ABWED	11-89-102-1790	696078-1	96214	TOOL KIT, MAINTENANCE TK-218/AAM-40	EA	1
	8	ABWED	11-79-107-6130	696011-1	96214	WRENCH, VALVE ADJUSTMENT	EA	1
	9	ABWED	11-30-107-6139	696225	96214	NOZZLE, HELIUM MK-8803/AAM-40	EA	1
						GROUP: 3A1 TEST SET, CRYOGENIC REFRIGERATOR TS-3016/AAM-40		
	3	PAHZZ	5935-702-4199	M39024-10-02	21349	JACK, TIP	EA	1
	2	PAHZZ	5935-702-2344	MS3124Z12-10P	96906	CONNECTOR, RECEPTACLE, ELECTRICAL	EA	1
	3	PAHZZ	5935-760-0321	M33024-10-03	21349	JACK, TIP	EA	1
	4	PAHZZ	5935-260-2686	K679-43	91836	CONNECTOR, RECEPTACLE, ELECTRIC	EA	1
	5	PAHZZ	5935-378-1848	L22TE1954H1	09922	CONNECTOR, BODY, RECEPTACLE	EA	1
	6	PAHZZ	5935-383-9495	RC4NAYT504A	21349	RESISTOR, VARIABLE, COMPOSITION	EA	1
	7	PAHZZ	5355-556-0151	MS91528-1025	96906	KNOB, BAR	EA	3
	8	PAHZZ	5905-228-7692	RS6000-30	21349	RESISTOR, FIXED, WIREWOUND	EA	1
	9	PAHZZ	5961-905-5785	1S748	21349	SEMI-CONDUCTOR, DEVICE, DIODE	EA	1
	10	PAHZZ	5940-945-6149	CP3650-1-000-203	71279	TERMINAL STUD	EA	12
	11	PAHZZ	5905-226-3974	RN60D3013F	21349	RESISTOR, FIXED, FILM	EA	1
	12	PAHZZ	5355-985-6888	MS92528-2M2B	96906	KNOB, BAR	EA	1
	13	PAHZZ	5930-425-9803	418633-13	96214	SWITCH, ROTARY	EA	1
	14	PAHZZ	5340-087-7405	91020	77969	BUMPER, RUBBER	EA	4
	15	PAHZZ	5961-229-7676	1N4995	21349	SEMICONDUCTOR DEVICE, DIODE	EA	6
	16	PAHZZ	6625-480-5709	695871-1	96214	CHOPPER, WHEEL	EA	1
	17	PAHZZ	4920-902-6692	515692-1	96214	MIRROR	EA	1
	18	PAHZZ	5940-827-2653	MS77068-2	96906	TERMINAL, LUG	EA	6
	19	PAHZZ	5940-983-6043	3MB2	21349	TERMINAL BOARD	EA	1
	20	PAHZZ	6105-433-5742	1BA611	25140	MOTOR, AC	EA	1
	21	PAHZZ	6125-901-9305	83A1200	25140	MOTOR, AC, ASSEMBLY	EA	1
	22	PAHZZ	3020-326-2489	1A1262-2	25140	GEAR, ASSEMBLY	EA	1
						GROUP: 3MP3 NOZZLE, HELIUM MX-8803/AAM-40		
	1	PAHZZ	4730-722-1375	600-7-4	02570	COUPLING, PIPE TO TUBE	EA	1
	2	PAHZZ	6625-911-9693	41591	14028	PROBE, HELIUM	EA	1
	3	PAHZZ	4730-455-1578	696305-1	96214	ADAPTER	EA	1
	4	PAHZZ	5330-584-0265	MS26775-012	96906	PACKING, PREFORMED	EA	1
	5	XBHZZ	5340-136-2884	5400S6-4	00624	CAP, DUST AND MOISTURE	EA	1
	6	PAHZZ	4730-222-9076	5400S2-4	00624	COUPLING, HALF, QUICK DISCONNECT	EA	1
						GROUP: 3MP6 GUILLOTINE, PINCH-OFF TOOL ASSY TL-770/AAM-40		
	1	PAHZZ	5120-147-2545	633036-1	96214	GUILLOTINE, PINCH-OFF TOOL	EA	1
	2	PAHZZ	5360-138-4063	633230-1	96214	SPRING, COMPRESSION, PINCH-OFF	EA	2
	3	XBHZZ		633037-1	96214	BASE, PINCH-OFF TOOL	EA	1
	4	PAHZZ	5110-470-4304	633038-1	96214	BLADE, PINCH-OFF TOOL	EA	2



EL6625-2446-40P-TM-12

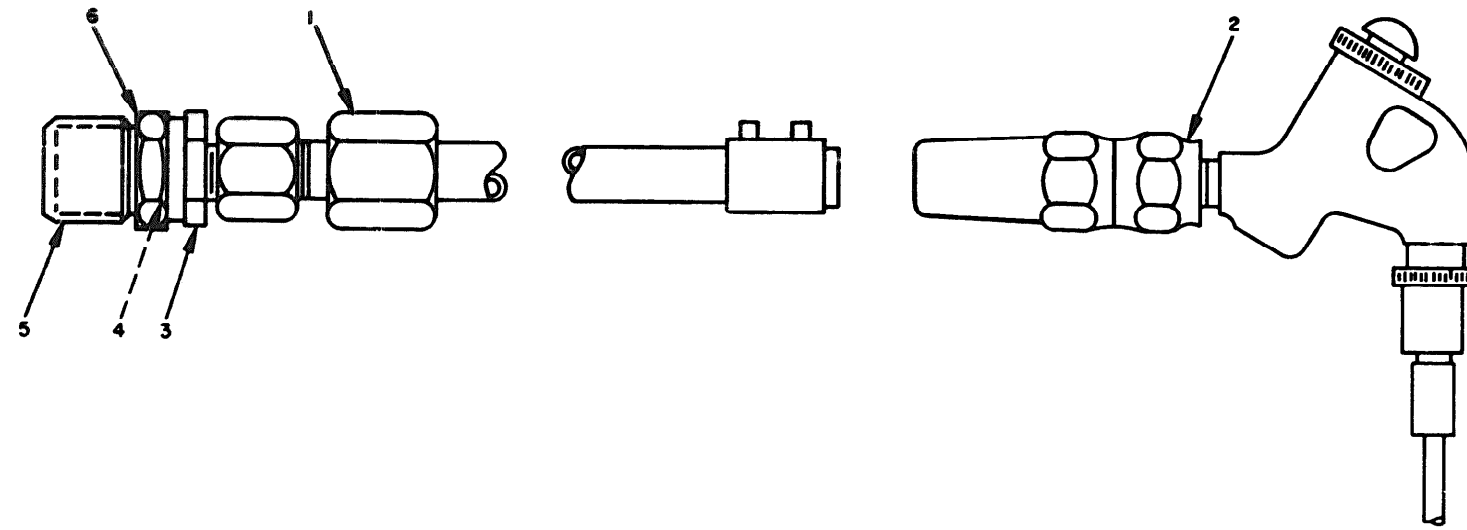
Figure 12. Test Set, Maintenance Group OQ-75/AAM-40.



NOTE: PREFIX ALL INCOMPLETE REFERENCE DESIGNATOR WITH 3A1.

EL6625-2446-40P-TM-13

Figure 13. Test Set, Cryogenic Refrigerator TS-3016/AAM-40.



EL6625-2446-40P-TM-14

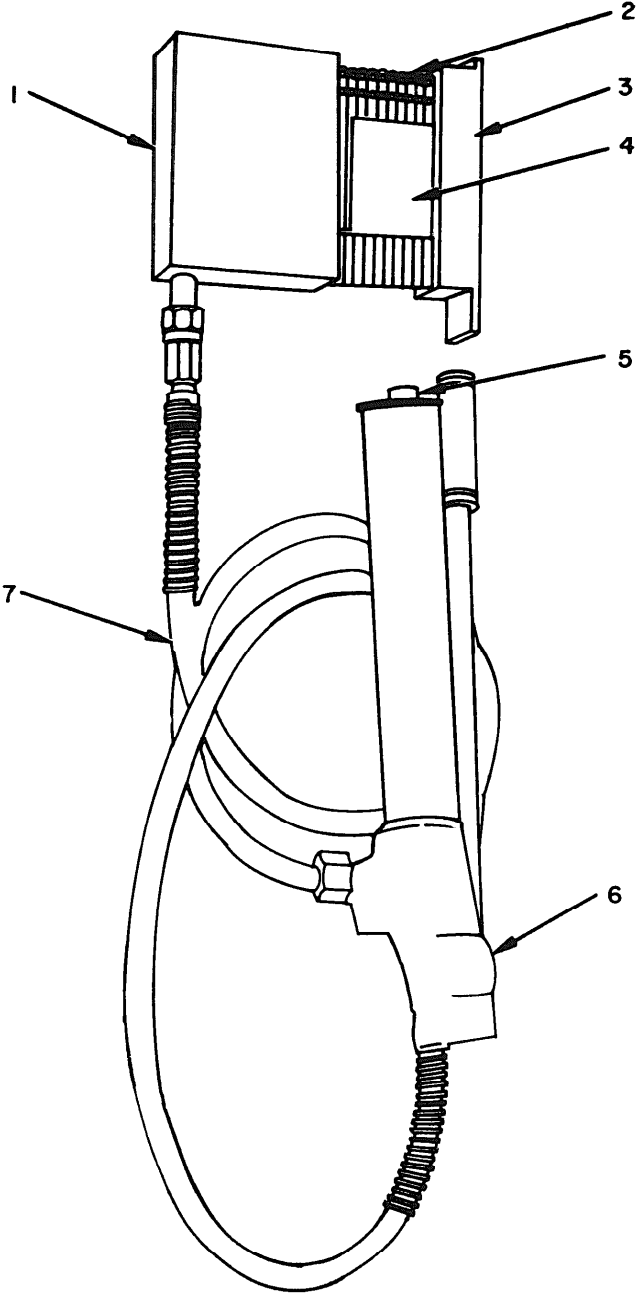
Figure 14. Nozzle, Helium MX-8803/AAM-40.

## SECTION II REPAIR PARTS LIST (CONTINUED)

TM 11-6625-2446-40P

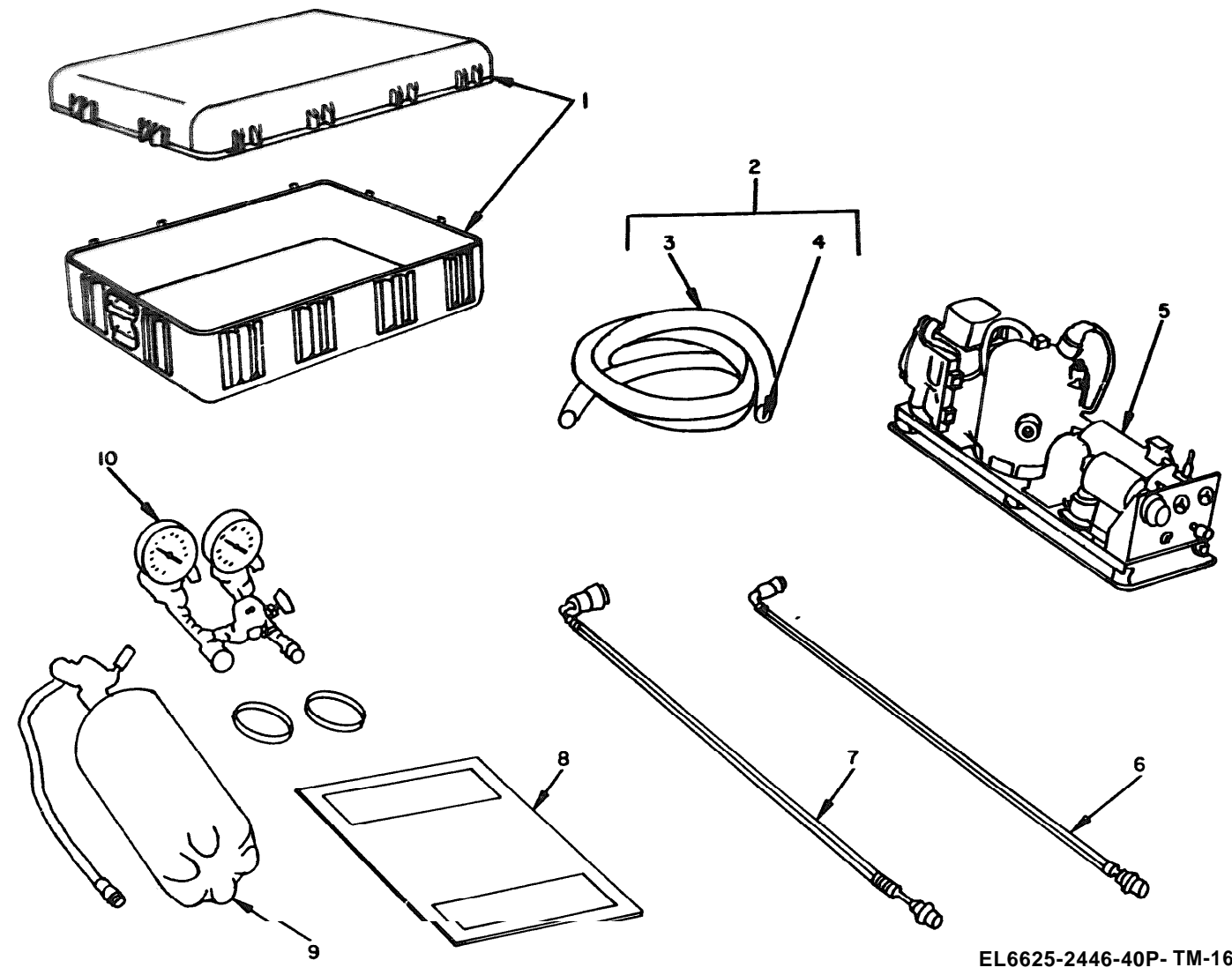
(1) ILLUSTRATION		(2) SMR CODE	(3) FEDERAL STOCK NUMBER	(4) PART NUMBER	(5) FSCM	(6) DESCRIPTION	(7) UNIT OF MEAS	(8) QTY INC IN UNIT
(A) FIG NO.	(B) ITEM NO.					USABLE ON CODE		
15	5	PAHZZ	5340-702-4915	MS1798C413	96906	EPIN, QUICK RELEASE	EA	4
15	6	PAHZZ	44320-976-5874	P14	26952	PUMP, HYDRAULIC RAM	EA	1
15	7	PAHZZ	44720-231-7779	R887	26952	HOSE ASSEMBLY	EA	1
						GROUP: 4 EVACUATION-CHARGING GROUP OA-8591/AAM-40		
16	1	PDODD	44130-197-6345	6695941-1	81349	CASE, EVACUATION-CHARGING GROUP CY-6947/AAM-40	EA	1
16	2	PAOZZ	44720-409-8083	696304-1	96214	HOSE, VACUUM MX-8806/AAM-40	EA	1
16	3	PAHZZ		4417710-1	96214	HOSE	EA	1
16	4	PAOZZ	44730-493-9257	2201A4P316	02570	ADAPTER, TUBE TO PIPE	FA	1
16	5	PAOHH	5855-466-0155	EB3850015	96214	COMPRESSOR INSTALLATION CONTROL ASSEMBLY	FA	1
						HD-841/AAS-24		
16	6	PAOZZ	44720-409-8082	696016-1	96214	HOSE, REFRIGERANT MX-8805/AAM-40	FA	1
16	7	PAOZZ	44720-409-8081	696015-1	81349	HOSE, REFRIGERANT MX-8804/AAM-40	EA	1
16	8	PDODD	5850-197-1765	666064-2	96214	PLATE, RECEIVER OPTICS MT-4314/AAM-40	FA	1
16	9	PAODD	6625-480-5710	695923-1	96214	TANK, OIL CHARGING COMPRESSOR	EA	1
16	10	PDODD	44730-197-6344	694735-1	81349	MANIFOLD, CHARGING AND TESTING REFRIGERANT MX-8807/AAM-40	EA	1
						GROUP: 4MP8 MANIFOLD, CHARGING AND TESTING REFRIGERANT MX-8807/AAM-40		
17	1	PAHZZ	6685-794-8410	1408-0-600	61349	GAUGE, PRESSURE, INDICATING	EA	2
17	2	PAHZZ	3950-460-7135	5400S2-4	00624	COUPLING, HALF, QUICK DISCONNECT	EA	2
17	3	PAOZZ	5340-437-8398	5400S6-4	00624	CAP, DUST	FA	2
17	4	PAHZZ	5330-584-0265	MS28775-012	96906	PACKING, PREFORMED	EA	2
17	5	PAOZZ	44720-432-7296	720390-1	96214	LINE, RETURN	EA	1
17	6	PAHZZ	44730-410-4527	5400S5-4	00624	COUPLING, HALF, QUICK DISCONNECT	EA	1
17	7	XBHZZ		694314-1	96214	ADAPTER, STRAIGHT, TUBE TO BOSS	EA	1
17	8	PAHZZ	4820-472-4478	695969-1	96214	VALVE, NEEDLE MODIFIED	FA	2
17	9	XBHZZ		601A4F316	02570	ADAPTER, STRAIGHT	EA	2
17	10	PAHZZ	4820-460-2704	3312C6S	28968	VALVE, NEEDLE	EA	1
17	11	PAOZZ	44730-613-9864	5400S6-8	00624	CAP, DUST	EA	1
17	12	PAHZZ	44730-613-9863	5400S2-8	00624	COUPLING, HALF, QUICK DISCONNECT	FA	1
17	13	PAHZZ	5330-618-1920	MS28775-017	96906	PACKING, PREFORMED	EA	2
17	14	XBHZZ		694313-1	96214	ADAPTER, STRAIGHT, TUBE TO BOSS	EA	2
17	15	XBHZZ		415755-1025	96214	CAP, PIPE	EA	1
17	16	PAHZZ	44730-613-9862	5400S5-8	00624	COUPLING, HALF QUICK DISCONNECT	FA	1
17	17	PAOZZ	44770-432-7287	720388-1	96214	LINE, SUPPLY	EA	1
17	18	PAHZZ	4820-472-4480	695969-1	96214	VALVE, NEEDLE MODIFIED	EA	1
						GROUP: 6 COMPRESSOR, ROTARY HD-841/AAS-74		
18	1	PAFZZ	4130-222-9097	C3850044	31949	HOSE, ASSEMBLY, FLEX, GAS RETURN	FA	1
18	2	PAFZZ	4130-222-9098	C3850070	31949	HOSE, ASSEMBLY, FLEX, GAS RETURN	EA	1
18	3	PADZZ	4130-222-9115	B3821029	31949	FLOW RESTRICTOR ASSEMBLY	FA	1
18	4	PAFDD	4130-222-9114	C3850046	31349	COMPRESSOR	FA	1





EL6625-2446-40P-TM-15

Figure 15. Guillotine, Pinch-Off Tool Assembly TL-770/AAM-40.



EL6625-2446-40P- TM-16

Figure 16. Evacuation-Charging Group OA-659/AAM-40.

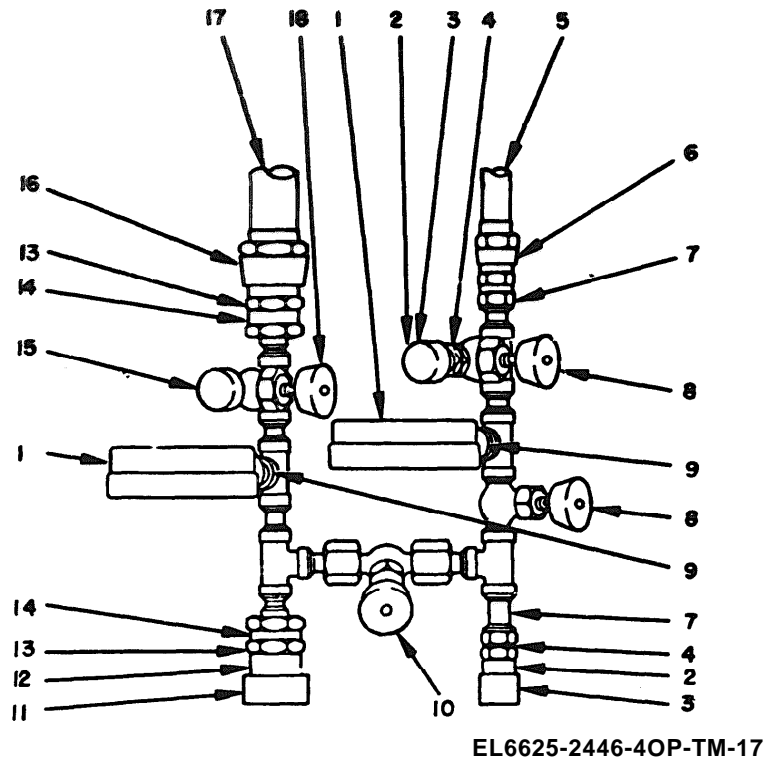
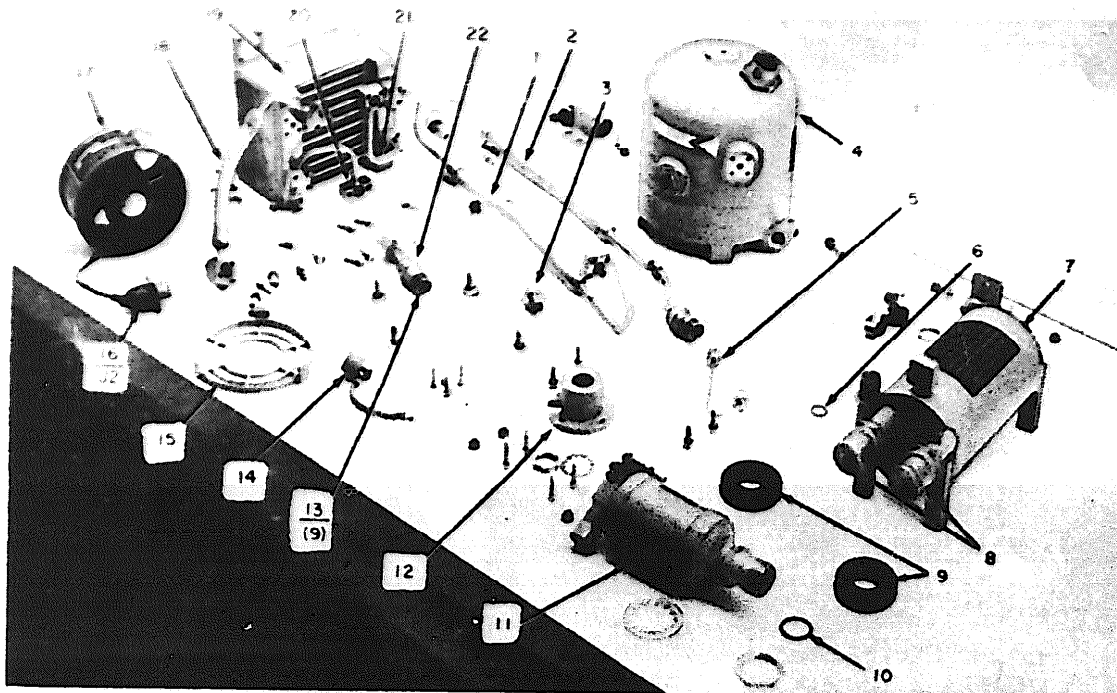


Figure 17. Manifold, Charging and Testing Refrigerant MX-8807/AAM-40.

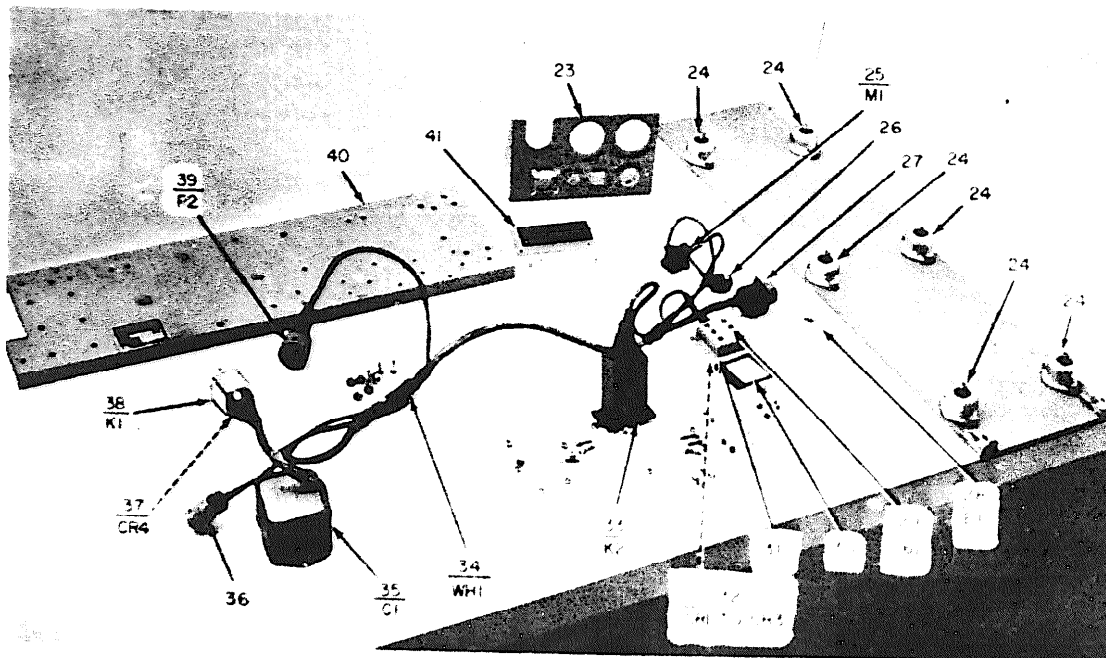
## SECTION II REPAIR PARTS LIST (CONTINUED)

TM 11-6625-2446-40P

(1) ILLUSTRATION		(2) SMR CODE	(3) FEDERAL STOCK NUMBER	(4) PART NUMBER	(5) FSCM	(6) DESCRIPTION	USABLE ON CODE	(7) UNIT OF MEAS	(8) QTY INC IN UNIT
(A) FIG NO.	(B) ITEM NO.								
18	5	PAFZZ	5850-201-3634	B3850085	31949	PRESSURE TAP RETURN		EA	1
18	6	PAFZZ	5330-021-4162	559063-2	96214	GASKET HELIUM SMALL		EA	1
18	7	PAFDD	4130-222-9104	D3850067	31949	OIL SEPARATOR ASSEMBLY		EA	1
18	8	PAFZZ	6685-689-3424	G 2744-400	03936	GAGE, PRESSURE		EA	2
18	9	PAFZZ	5325-174-9340	AN931A162	88044	GROMMET RUBBER		EA	2
18	10	PAFZZ	5330-281-2877	539063-1	96214	GASKET HELIUM LARGE		EA	1
18	11	PAFZZ	4130-222-9113	B3821036G1	31349	ABSORBER ASSEMBLY		EA	1
18	12	XBFZZ		B3821020	31949	ABSORBER SUPPORT		EA	1
18	13	PAFZZ	5330-469-8285	2-10E515-8	83259	PACKING PREFORMED		EA	2
18	14	XBFZZ		B3850053	31349	CAP, DUST, ASSEMBLY		EA	1
18	15	XBFZZ		R3821040	31949	GUARD, FAN		EA	1
18	16	PAFZZ	5935-004-6810	MS3110E10-6P	96906	CONNECTOR, RECEPTACLE, ELECTRICAL		EA	1
18	17	PAFZZ	4140-034-7482	PROPIMAX3B387JS	82817	FANASSEMBLY, COMPRESSOR		EA	1
18	18	PAFZZ	4130-222-9116	B3850034	31949	HOSE ASSEMBLY FLEX AFTERCOLLER		EA	1
18	19	PAFDD	4130-222-9119	D3850008	31949	HEAT EXCHANGER		EA	1
18	20	PADZZ	4130-222-9124	B3850073	31949	LINE, INTER-COOLER		EA	1
18	21	PADZZ	4130-222-9123	B3850075	31949	LINK, AFTER-COOLER		EA	1
18	22	PAFZZ	4130-222-9101	B3821066	31949	OIL/GAS CHARGING, FITTING		EA	1
18	23	XBFZZ		A3850052	31929	BRACKET SUPPORT		EA	1
18	24	PAFZZ	5340-304-4547	B3850107	31949	ISOLATOR		EA	6
18	25	PAFZZ	6645-255-1371	MS17322-6A	96906	METER, TIME, TOTALIZING		EA	1
18	26	PAFZZ	4130-222-9125	A3850040	31949	FAULT DETECTOR		EA	1
18	27	PAFZZ	5935-902-0383	MS3110E14-15P	96906	CONNECTOR, RECEPTACLE, ELECTRICAL		EA	1
18	28	PAFZZ	5940-495-0997	MSR18905	96906	TERMINAL LUG		EA	1
18	29	PAFZZ	5940-935-8222	SE181E01	81349	TERMINAL STUD		EA	6
18	30	XBFZZ		A3850054	31949	GASKET, COVER		EA	1
18	31	XBFZZ		B3850055	31949	COVER, DIODE		EA	1
18	32	PAFZZ	5961-899-8173	1N647	81349	SEMICONDUCTOR DEVICE, DIODE		EA	1
18	33	PAFZZ	5945-409-9095	GSE22-511-0005	24727	RELAY, PHASE SENSING		EA	1
18	34	ADFDD		D3850059	31949	WIRING HARNESS ASSEMBLY		EA	1
18	35	PAFZZ	5910-420-3400	P93732	56289	CAPACITOR POWER-FACTOR CORRECT		EA	1
18	36	PAFZZ	5935-958-8462	MS3116E10-6S	96906	CONNECTOR, PLUG, ELECTRICAL		EA	1
18	37	PAFZZ	5961-702-3435	1N3600	81349	SEMICONDUCTOR DEVICE, DIODE		EA	1
18	38	PAFZZ	5945-509-2831	MS27400-1	96906	RELAY		EA	1
18	39	PAFZZ	5935-975-4139	MS3116E14-12S	96906	CONNECTOR, PLUG, ELECTRICAL		EA	1
18	40	XBFZZ		C3850028	31949	PANEL, ELECTRICAL		EA	1
18	41	XBFZZ		A3417069	31949	NAME PLATE, COMPRESSOR		EA	1
18	42	PAFZZ	,4730-613-9862	5400S5-8	00624	CONNECTOR		EA	2
18	43	PAFZZ	,4720-432-7287	SM-C-2019778	80063	LINE, SUPPLY		EA	1
18	44	PAFZZ	,4730-272-9076	5400S2-4	00624	CONNECTOR		EA	2
18	45	PAFZZ	,4730-410-4522	5400S5-4	00624	CONNECTOR		EA	1
18	46	PAFZZ	,4720-432-7286	SM-C-2019779	80063	LINK, RETURN		EA	1



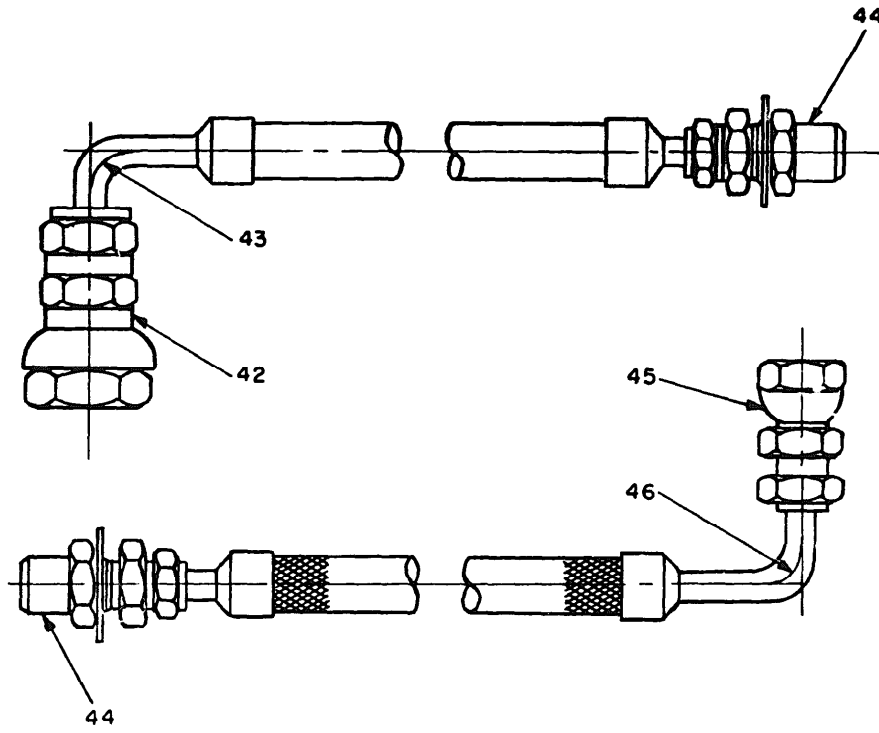
A



B

EL6625-2446-40P-TM-18 (1)

Figure 18. (1) Compressor, Rotary HD-84/AAS-24 (Sheet 1 of 2).



EL662502446040P-TM-18 ②

Figure 18. ② Compressor, Rotary HD-841/AAM-40 (Sheet 2 of 2).

SECTION IV FEDERAL STOCK NUMBER AND PART NUMBER INDEX

STOCK NUMBER	FIG. NO.	ITEM NO.	STOCK NUMBER	FIG. NO.	ITEM NO.
3010-0987-1619	8	6	4730-230-3738	8	43
3020-326-2489	13	22	4730-230-3740	8	22
3950-460-7135	17	2	4730-230-3741	8	38
4130-152-0890	9	21	4730-232-6360	8	37
4130-197-6337	9	26	4730-272-9076	18	44
4130-197-6338	1	3	4730-410-4522	18	45
4130-197-6339	12	9	4730-410-4527	17	6
4130-197-6342	12	5	4730-417-3077	8	47
4130-197-6343	1	4	4730-455-1578	14	3
4130-197-6344	16	10	4730-455-1579	8	42
4130-197-6345	16	1	4730-480-7622	8	23
4130-197-6346	1	2	4730-481-3018	8	51
4130-197-6348	12	1	4730-481-3019	8	20
4130-197-6349	9	22	4730-493-9257	16	4
4130-197-6350	1	1	4730-613-9862	17	16
4130-197-6350	2	3	4730-613-9862	18	42
4130-197-6351	2	2	4730-613-9863	17	12
4130-222-9097	18	1	4730-613-9864	17	11
4130-222-9098	18	2	4730-684-4065	8	52
4130-222-9101	18	22	4730-691-5459	8	19
4130-222-9104	18	7	4730-722-1375	14	1
4130-222-9113	18	11	4730-771-5346	8	32
4130-222-9114	18	4	4770-432-7287	17	17
4130-222-9115	18	3	4810-152-1573	8	30
4130-222-9116	18	18	4810-480-7623	8	41
4130-222-9119	18	19	4810-480-7628	8	40
4130-222-9123	18	21	4820-425-6058	8	29
4130-222-9124	18	20	4820-455-1585	8	16
4130-222-9125	18	26	4820-460-2704	17	10
4130-230-3760	2	4	4820-472-4478	17	8
4130-230-3761	3	2	4820-472-4479	8	17
4130-230-3762	3	1	4820-472-4480	17	18
4130-230-3769	3	5	4820-474-9483	8	12
4130-403-5821	9	8	4820-481-3016	8	25
4130-403-5822	9	11	4820-710-0267	8	53
4130-403-5824	9	16	4920-902-6692	13	17
4130-433-2337	9	19	5110-252-5748	12	2
4130-433-2338	9	13	5110-252-5749	12	4
4140-034-7482	18	17	5110-470-4304	15	4
4310-230-0737	8	9	5120-147-2545	15	1
4310-230-3736	8	34	5170-189-6130	12	8
4310-407-7032	2	13	5180-252-5750	12	7
4310-407-7035	2	1	5310-158-8868	8	36
4310-481-3006	8	11	5325-174-9340	18	9
4310-484-8615	2	7	5325-543-4450	3	9
4320-976-5874	15	6	5325-641-3822	11	11
4330-480-7629	8	10	5325-802-6232	3	17
4710-480-7624	8	21	5330-021-4164	18	6
4710-480-7626	8	39	5330-137-5970	8	50
4720-231-7779	15	7	5330-281-2877	18	10
4720-409-8081	16	7	5330-451-2922	8	35
4720-409-8082	16	6	5330-469-8285	18	13
4720-409-8083	16	2	5330-584-0265	14	4
4720-432-7286	17	5	5330-584-0265	17	4
4720-432-7286	18	46	5330-618-1920	17	13
4720-432-7287	18	43	5340-056-9941	11	10
4720-493-9258	8	24	5340-087-7405	13	14
4720-493-9259	8	31	5340-136-2884	14	5
4730-043-3089	8	48	5340-304-4547	18	24
4730-222-9076	14	6	5340-437-8898	17	3

SECTION IV FEDERAL STOCK NUMBER AND PART NUMBER INDEX (CONTINUED)

STOCK NUMBER	FIG. NO.	ITEM NO.	STOCK NUMBER	FIG. NO.	ITEM NO.
5340-702-4915	15	5	5930-615-7878	10	12
5340-778-8162	11	5	5930-615-7883	10	11
5340-797-4026	8	44	5930-655-1582	3	37
5355-556-0157	13	7	5935-004-6810	18	16
5355-616-7669	3	13	5935-135-4072	9	20
5355-985-6888	3	11	5935-184-6837	8	26
5355-985-6888	13	12	5935-260-2686	13	4
5360-138-4063	15	2	5935-356-3141	7	4
5360-436-7314	12	3	5935-432-6534	3	36
5850-197-1765	16	8	5935-432-6535	3	34
5850-201-3634	18	5	5935-432-6535	6	5
5855-466-0155	16	5	5935-432-6535	8	33
5905-043-0381	4	18	5935-503-5283	9	2
5905-059-9882	3	19	5933-636-5145	8	46
5909-060-2470	4	17	5935-702-4199	13	1
5905-062-0152	4	16	5935-715-2756	9	17
5905-062-5039	4	12	5935-724-7567	9	18
5905-078-7777	4	20	5935-725-4484	10	19
5905-081-6381	4	13	5935-726-1322	2	5
5905-177-7369	4	22	5935-731-0139	3	39
5905-226-3974	13	11	5935-731-0139	9	10
5905-229-7692	13	8	5935-761-3885	2	10
5905-402-4027	4	21	5935-761-3885	9	7
5905-402-4027	5	7	5935-762-0312	13	3
5905-412-3719	6	10	5935-765-5976	2	6
5905-763-6653	4	19	5935-765-5991	9	4
5905-850-1982	7	7	5935-779-5140	9	14
5905-850-1982	11	3	5935-823-0487	9	12
5905-883-8433	4	14	5935-837-6095	8	15
5905-893-9499	13	6	5935-838-3695	7	5
5905-969-5851	6	11	5935-838-3695	11	9
5905-988-2307	4	15	5935-843-7133	2	9
5905-998-9232	4	23	5935-843-7133	9	6
5910-137-4427	6	3	5935-878-1848	13	5
5910-189-3681	5	1	5935-880-8896	7	6
5910-420-3400	18	35	5935-880-8896	11	8
5910-460-0847	4	4	5935-901-3326	8	18
5910-490-0397	4	2	5935-902-0383	18	27
5910-822-5683	5	2	5935-902-2344	6	9
5910-850-0552	7	2	5935-902-2344	13	2
5910-904-9869	11	7	5935-902-8865	3	29
5910-926-0061	7	3	5935-903-2439	9	15
5910-996-0532	4	?	5935-912-7825	10	18
5915-127-4305	7	8	5935-928-8178	8	7
5915-127-4305	11	1	5935-938-7376	8	45
5915-905-1008	11	4	5935-940-2949	8	8
5915-990-1409	7	9	5935-958-4462	18	36
5925-078-7466	3	32	5935-975-4139	18	39
5925-118-1098	3	42	5935-988-9656	9	9
5925-137-4515	3	38	5940-082-4861	10	22
5925-229-7681	10	10	5940-168-3382	8	2
5925-700-5637	3	41	5940-409-8275	6	8
5925-762-2258	3	27	5940-449-8089	10	21
5925-762-2258	10	5	5940-495-0997	18	28
5930-168-7942	8	28	5940-727-4588	11	13
5930-410-7783	3	24	5940-820-4549	11	2
5930-425-9803	13	13	5940-827-2653	13	18
5930-451-8286	8	27	5940-935-8222	18	29
5930-465-4349	3	25	5940-945-6149	10	14



SECTION IV FEDERAL STOCK NUMBER AND PART NUMBER INDEX (CONTINUED)

STOCK NUMBER	FIG. NO.	ITEM NO.	STOCK NUMBER	FIG. NO.	ITEM NO.
5940-945-6149	13	10	6645-255-1371	18	25
5940-983-6043	13	19	6645-470-4305	10	20
5940-983-6053	3	4	6645-904-2754	3	40
5940-983-6053	10	13	6685-689-3424	18	8
5940-983-6115	8	1	6685-794-8410	17	1
5945-182-2869	6	6			
5945-406-3076	4	10			
5945-409-9095	18	33			
5945-490-5199	3	14			
5945-509-2831	3	15			
5945-509-2831	18	38			
5945-850-1144	3	16			
5945-878-8522	10	1			
5950-433-2451	7	1			
5950-433-2451	11	6			
5950-433-2451	11	12			
5950-481-3085	3	3			
5950-481-3086	6	1			
5950-493-9396	3	18			
5950-767-6832	5	6			
5961-054-0339	4	9			
5961-190-6084	6	2			
5961-229-7675	3	31			
5961-299-7675	10	17			
5961-229-7676	13	15			
5961-702-3435	18	37			
5961-723-3602	4	6			
5961-723-3602	5	4			
5961-723-3602	10	3			
5961-762-0201	4	5			
5961-833-3043	4	7			
5961-847-5508	5	3			
5961-899-8173	18	32			
5961-905-5785	13	9			
5961-951-5474	4	8			
5962-861-3220	4	24			
6105-234-3352	8	3			
6105-433-5742	13	20			
6125-901-9305	13	21			
6210-482-3870	3	21			
6210-482-3870	10	8			
6210-482-3871	10	9			
6210-482-3872	3	28			
6210-482-3872	10	6			
6210-945-7605	3	33			
6240-155-7836	3	20			
6240-155-7836	10	7			
6625-137-5879	3	12			
6625-196-2844	2	11			
6625-196-2844	9	1			
6625-449-8077	3	10			
6625-451-8272	3	8			
6625-470-4315	2	8			
6625-470-4315	9	5			
6625-480-5701	8	13			
6625-480-5707	8	14			
6625-480-5709	13	16			
6625-480-5710	16	9			
6625-911-9693	14	2			

SECTION IV FEDERAL STOCK NUMBER AND PART NUMBER INDEX (CONTINUED)

PART NUMBER	FSCM	FIG. NO.	ITEM NO.	PART NUMBER	FSCM	FIG. NO.	ITEM NO.
AN931A162	88044	18	9	EA1A124	35344	4	10
AP13-299-14	81541	3	38	E3850015	96214	16	5
ASPI	31408	8	11	FCR15-1-2-5-8	71041	8	6
A3417069	31949	18	41	720388-1	96214	17	17
A3850040	31949	18	26	720390-1	96214	17	5
A3850052	31929	18	23	GSE22-501-0013	24727	3	14
A3850054	31949	18	30	GSE22-511-0005	24727	18	33
A500-002-000	14937	8	35	G2744-400	03936	18	8
A97794-500-0	14937	8	32	HC1S30	18741	6	6
B231	98410	8	2	H887	26952	15	7
B3821020	31949	18	12	IVS6A316WITHBAR-			
B3821029	31949	18	3	HANDLE	12623	8	49
B3821036G1	31349	18	11	KC79-43	91836	13	4
B3821066	31949	18	22	KV79-18	91836	3	34
B3850034	31949	18	18	KV79-18	91836	6	5
B3850053	31349	18	14	KV79-18	14937	8	33
B3850055	31949	18	31	LB8210C95VH	04845	8	30
B3850073	31949	18	20	LB8262C91VH	04845	8	41
B3850075	31949	18	21	LP9A1E154J	01884	5	1
B3850085	31949	18	5	L22TE19S4N1	09922	13	5
B3850107	31949	18	24	L22TF19P6N1	09922	9	20
B600-136-00F	14937	8	43	L64AA40	04665	8	44
B97571-007-0	14937	8	38	MSR18905	96906	18	28
B97571-016-0	14937	8	42	MS17160-125	96906	11	10
B97794-001-0	14937	8	31	MS17160-145	96906	11	5
B97794-003-0	14937	8	24	MS17322-6A	96906	3	40
B97794-011-0	14937	8	17	MS17322-6A	96906	18	25
B97794-014-0	14937	8	51	MS1798C413	96906	15	5
B97794-022-0	14937	8	14	MS25068-21	96906	10	11
B97794-031-0	14937	2	7	MS25068-31	96906	10	12
CH09A1NC225K	81349	7	2	MS25237-327	96906	3	20
CH09A1NF474K	81349	11	7	MS25237-327	96906	10	7
CK06BX104M	81349	4	4	MS27400-1	96906	3	15
CK63AW103M	81349	5	2	MS27400-1	96906	18	38
CMR1A502144K	81349	6	3	MS27400-2	96906	10	1
CM05ED470J03	81349	4	2	MS27418-1B	96906	3	16
CP3650-1-000-203	71279	10	14	MS28775-012	96906	14	4
CP3650-1-000-203	71279	13	10	MS28775-012	96906	17	4
CSR13D226KL	81349	4	3	MS28775-017	96906	17	13
CSR13G186KL	81349	4	1	MS3108E16SIS	96906	8	46
C3850028	31949	18	40	MS3110E10-6P	96906	18	16
C3850044	31949	18	1	MS3110E14-15P	96906	18	27
C3850046	31349	18	4	MS3116E10-6S	96906	18	36
C3850070	31949	18	2	MS3116E14-12S	96906	18	39
C500-368-000	14937	8	25	MS312F14-SSW	96906	8	7
C600-067-1500	70472	12	3	MS3122E14-5PY	96906	8	26
C97571-048-0	14937	8	9	MS3124E12-10P	96906	6	9
C97794-004-0	14937	8	21	MS3124E12-10P	96906	13	2
C97794-005-0	14937	8	39	MS3124E12-10PZ	96906	3	30
C97794-010-0	14937	8	40	MS3124E12-10S	96906	10	18
DV36THREADED	07682	8	13	MS3124E12-3P	96906	7	5
D3850008	31949	18	19	MS3124E12-3P	96906	11	9
D3850059	31949	18	34	MS3124E14-12S	96906	10	19
D3850067	31949	18	7	MS3124E14-5P	96906	7	6
D500-366-000	14937	8	12	MS3124E14-5P	96906	11	8
D500-366-030	14937	8	16	MS3124E22-21S	96906	3	29
D530T2M01	91816	8	53	MS3124F12-3P	96906	8	45
D97794-000-0	14937	2	13	MS3126F10-6S	96906	9	17
D97794-007-0	14937	8	23				

SECTION IV FEDERAL STOCK NUMBER AND PART NUMBER INDEX (CONTINUED)

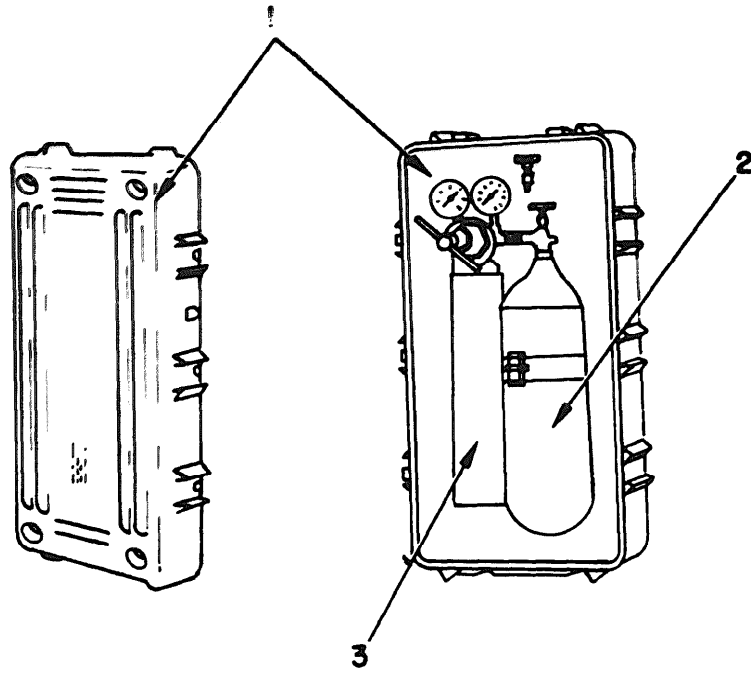
PART NUMBER	FSCM	FIG. NO.	ITEM NO.	PART NUMBER	FSCM	FIG. NO.	ITEM NO.
MS3126F12-10P	96906	9	9	R3821040	31949	18	15
MS3126F12-10S	96906	3	39	SE099E01	81349	11	13
MS3126F12-10S	96906	9	10	SE12XC04	81349	10	22
MS3126F12-10SZ	96906	7	4	SE181E01	81349	18	29
MS3126F12-3S	96906	9	4	SE209D02	81349	6	8
MS3126F-12-3S	96906	8	8	SM-C-2019778	80063	18	43
MS3126F14-12P	96906	9	18	SM-C-2019779	80063	18	46
MS3126F14-15P	96906	9	14	SN52709L	01295	4	24
MS3126F14-15S	96906	9	15	SS4P4B	18034	8	29
MS3126F14-5PY	96906	8	15	UPCCSGM23AADM	97954	4	11
MS3126F14-5S	96906	2	10	UPCCSGM23AAEP	97954	5	5
MS3126F14-5S	96906	9	7	UP106M	81349	2	9
MS3126F14-5SX	96906	8	18	UP106M	81349	9	6
MS35059-23	96906	3	37	UT4020	12969	4	5
MS35168-88E	96906	9	12	08-83283-81	87034	3	21
MS77068-2	96906	13	18	08-83283-81	87034	10	8
MS91528-1D2B	96906	13	7	06-83283-82	87034	3	26
MS91528-2D2B	96906	3	13	08-83283-82	87034	10	9
MS91528-2M2B	96906	3	11	08-83283-83	87034	3	28
MS91528-2M2B	96906	13	12	08-83283-83	87034	10	6
M0832-84	87034	3	33	1A1262-2	25140	13	22
M39019-1-3	81349	10	10	1N3024B	81349	5	3
M39019-1-32	81349	3	42	1N3600	81349	18	37
M39019-1-60	81349	3	32	1N3612	81349	4	6
M39019-5-60	81349	3	27	1N3612	81349	5	4
M39019-5-60	81349	10	5	1N3612	81349	10	3
M39019-5-80	81349	3	41	1N4990	81349	3	31
M39024-10-02	81349	13	1	1N4990	81349	10	17
M39024-10-03	81349	13	3	1N4995	81349	10	15
NAS557-16C	80205	3	9	1N4995	81349	13	15
NAS557-4C	80205	3	17	1N5550	81349	10	16
NAS557-6A	80205	11	11	1N647	81349	18	32
PROP1MAX3B387JS	82817	18	17	1N748	81349	13	9
P14	26952	15	6	1N757A	81349	4	7
P93732	56289	18	35	10JX63	80183	11	4
RE60G9530	81349	13	8	10105DAP	07047	4	8
RL42S103J	81349	5	6	12RB4-316	11649	8	47
RN60D1003F	81349	4	15	120-809-00	14937	8	50
RN60D1004F	81349	4	17	120-836-000	14937	8	22
RN60D2211F	81349	4	18	1408-0-600	61349	17	1
RN60D2741F	81349	4	20	18A611	25140	13	20
RN60D3013F	81349	13	11	184-084-000	14937	8	28
RN60D75ROF	81349	4	19	184-085-000	14937	8	27
RN60D8252F	81349	4	16	2HN316	11649	8	48
RN65C1004F	81349	7	7	20LSD-1	14937	8	34
RN65C1004F	81349	11	3	201A4F316	02570	16	4
RN65D1211F	81349	4	12	2051-2	71279	11	2
RN65D2211F	81349	4	14	21002	75382	8	1
RN65D6191F	81349	4	13	267965	65092	3	8
RT24C2P100	81349	4	21	267966	65092	3	12
RT24C2P100	81349	5	7	267967	65092	3	10
RT24C2P101	81349	4	22	294UH4	00462	8	4
RT24C2P103	81349	6	4	294UH4R169	00462	8	3
RT24C2P501	81349	4	23	2-10E515-8	83259	18	13
RU4NAYS504A	81349	13	6	33A1200	25140	13	21
RV4SBYS504A	81349	3	19	3312C6S	28968	17	10
RW70U2R67F	81349	5	8	33-106	72653	9	2
R169	00462	8	5	33-108	72653	9	3

SECTION IV FEDERAL STOCK NUMBER AND PART NUMBER INDEX (CONTINUED)

PART NUMBER	FSCM	FIG. NO.	ITEM NO.	PART NUMBER	FSCM	FIG. NO.	ITEM NO.
3500S819-103	80294	3	23	692218-2	96214	9	21
37TB12	81349	3	4	692219-2	96214	9	19
37TB12	81349	10	13	692220-2	96214	9	16
371B2	81349	13	19	692221-1	96214	2	3
4ST316	11649	8	37	692222-2	96214	9	13
400-1-2-316	02570	8	52	692223-2	96214	9	11
415755-1025	96214	17	15	692224-2	96214	9	8
41591	14028	14	2	692424-1	96214	3	1
417710-1	96214	16	3	692427-1	96214	3	2
416448-3151	96214	6	11	692630-1	96214	3	36
418397-51	96214	7	3	694311-12	96214	2	5
41833-13	96214	13	13	694311-34	96214	2	6
418633-30	96214	3	24	694313-1	96214	17	14
418633-6	96214	3	25	694314-1	96214	17	7
44M45-02-2-3N	81073	10	4	694616-1	96214	12	6
5JX94	56289	7	9	694659-1	96214	3	35
500-001-000	14937	8	36	694711-3	96214	2	14
502-2	39481	8	10	694734-1	01295	12	1
515692-1	96214	13	17	694735-1	81349	16	10
519659-1	96214	10	20	694736-1	96214	12	7
533120-18	96214	6	7	694737-1	96214	9	25
533120-23	96214	6	10	694738-1	96214	2	2
533778-8	96214	3	22	694741-1	96214	1	1
539063-1	96214	18	10	694743-1	96214	1	2
539063-2	96214	18	6	694744-1	96214	1	3
5400S2-4	00624	14	6	694745-1	96214	1	4
5400S2-4	00624	17	2	695831-1	96214	9	22
5400S2-4	00624	18	44	695871-1	96214	13	16
5400S2-8	00624	17	12	695923-1	96214	16	9
5400S5-4	00624	17	6	695925	96214	12	9
5400S5-4	00624	18	45	695939-2	96214	9	24
5400S6-4	00624	14	5	695939-3	96214	9	27
5400S6-4	00624	17	3	695939-5	96214	9	23
5400S5-8	00624	17	16	695940-1	01295	12	5
5400S5-8	00624	18	42	695941-1	81349	16	1
5400S6-8	00624	17	11	695969-1	96214	17	8
600-1-4-316	02570	8	19	695969-1	96214	17	18
600-11-4-316	02570	8	20	696015-1	81349	16	7
600-7-4	02570	14	1	696016-1	96214	16	6
601A4F316	02570	17	9	696034-2	96214	3	7
633036-1	96214	15	1	696073-1	96214	12	8
633037-1	96214	15	3	696107-1	96214	10	2
633038-1	96214	15	4	696219-1	96214	3	6
633097-1	96214	12	4	696239-1	96214	2	4
633230-1	96214	15	2	696249-1	96214	3	5
642127-1	96214	3	18	696269-2	96214	10	21
652-612	12969	6	2	696275-1	96214	9	26
666064-2	96214	16	8	696277-1	96214	2	12
669690-1	96214	12	2	696303-1	96214	2	1
692070-1	96214	6	1	696304-1	96214	16	2
692083-1	96214	7	1	696305-1	96214	14	3
692083-1	96214	11	6	7717-19DAP	13103	4	9
692083-1	96214	11	12	9013-000-1002	72982	7	8
692089-1	96214	3	3	9013-000-1002	72982	11	1
692144-2	96214	2	11	9102Q	77969	13	14
692144-2	96214	9	1				
692145-2	96214	2	8				
692145-2	96214	9	5				

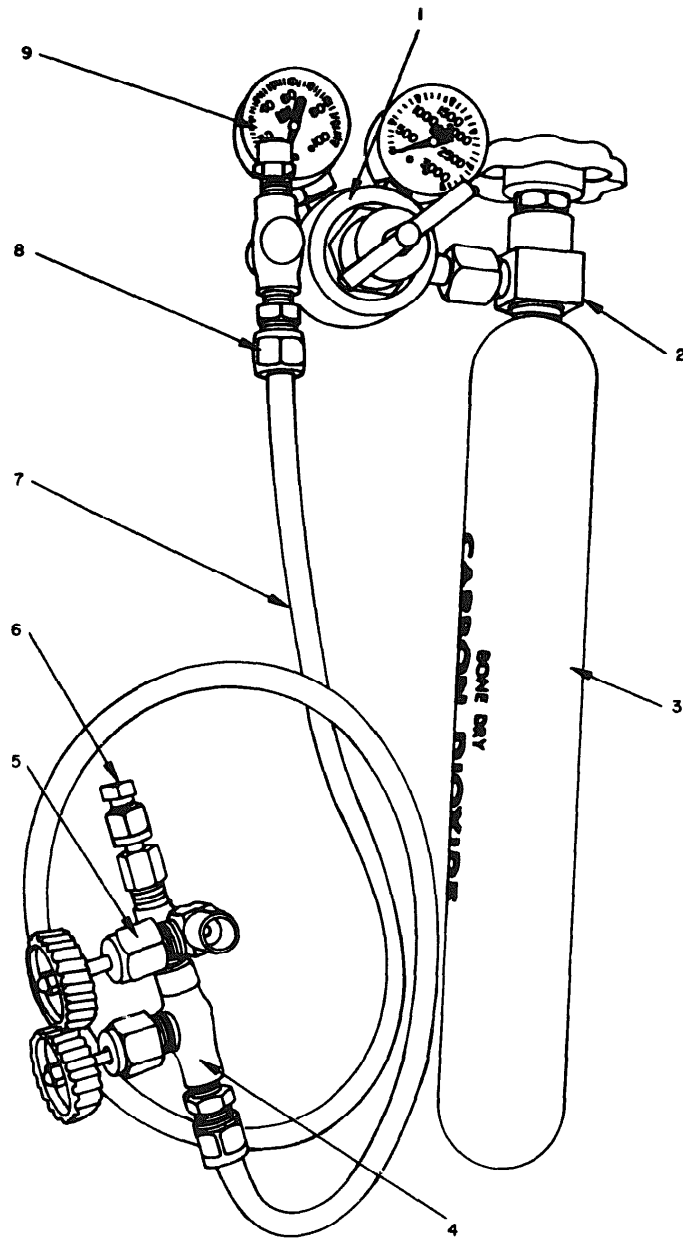
SECTION V REPAIR PARTS LIST

(1) ILLUSTRATION		(2) SMR CODE	(3) FEDERAL STOCK NUMBER	(4) PART NUMBER	(5) FSCM	(6) DESCRIPTION	(7) UNIT OF MEAS	(8) QTY INC IN UNIT
(A) FIG NO.	(B) ITEM NO.							
						GROUP: 1 SERVICE KIT, REFRIGERANT MK MK-1171/AAS-24		
19	1	PDGED			96214	CASE, SERVICE KIT CY-6872/AAS-24	EA	1
19	2	XBODD			96214	BOTTLE, HELIUM, MODIFIED	EA	1
19	3	XBODD			96214	BOTTLE, CARBON DIOXIDE	EA	1
						GROUP: IMP1 BOTTLE, CARBON DIOXIDE		
20	1	XBHZZ	4820-432-2265	524T1M30	91816	VALVE, RELIEF	EA	1
20	2	PAHZZ	4820-450-0949	4827L64B	28968	VALVE ASSEMBLY, NEEDLE	EA	1
20	3	PAOZZ	6830-281-3053	694650-1	96214	BOTTLE, CARBON DIOXIDE, MODIFIED	EA	1
20	4	PAOZZ	4730-481-9496	2PTSS	97576	TEE	EA	1
20	5	PAOZZ	4730-481-3017	11-8RRSSS	30780	TEE, HOSE	EA	1
20	6	PAOZZ	4730-491-3488	4000316	00576	CAP, TUBE	EA	1
20	7	PAOZZ	4720-503-5634	671329-1	96214	HOSE, TRANSFER, CARBON DIOXIDE	EA	1
20	8	PAOZZ	4730-431-6674	60M2-316	28968	ADAPTER	EA	1
20	9	PAOZZ	4730-222-9076	2ME316	11649	ELBOW, PIPE	EA	1
						GROUP: IMP2 BOTTLE, HELIUM, MODIFIED		
21	1	PAOZZ	4730-482-1057	696309-1	96214	ADAPTER	EA	1
21	2	XBHZZ		N1620	42527	KNOB, VALVE	EA	1
21	3	XBHZZ		204	42527	VALVE, CYLINDER, GAS	EA	1
21	4	PAOZZ		244346	42527	CYLINDER, COMPRESSED GAS	EA	1
21	5	PAOZZ	6830-660-0026	GRADE A, TYPE 1	36346	HELIUM, GASEOUS	EA	1
21	6	PAOZZ	4720-491-3485	692238-1	96214	HOSE ASSEMBLY, HELIUM BOTTLE	EA	1
21	7	PAOZZ	4720-139-4845	6670328-1	96214	HOSE, TRANSFER, HELIUM	EA	1
21	8	PAOZZ	55340-437-8807	5540058-4	00624	PLUG, DUST	EA	1
21	9	PAHZZ	4730-410-4527	5540055-4	0064	COUPLING, HALF, QUICK DISCONNECT	EA	1
21	10	PAHZZ	55330-585-6663	MMS28775-110	96906	PACKING, PREFORMED	EA	1
21	11	PAOZZ	4830-431-8410	55120T2M320	91816	VALVE, RELIEF	EA	1
21	12	PAHZZ		1190600-5C	00624	ADAPTER, TUBE TO HOSE	EA	1
21	13	PAHZZ	4730-451-1104	338-190627-4-5	00624	ADAPTER, PIPE TO HOSE	EA	1
21	14	PAOZZ	4730-432-9638	AAN917-2S	88044	TEE, INTERNAL THREAD	EA	1
21	15	PAOZZ	4730-431-3525	4411488-9	96214	NIPPLE, PIPE	EA	1
21	16	PAOHH	4820-834-2081	6692216-1	96214	VALVE, REGULATING MODIFIED	EA	1
21	17	PAHDD	4820-463-5277	NN1618	42527	VALVE, REGULATING,	EA	1



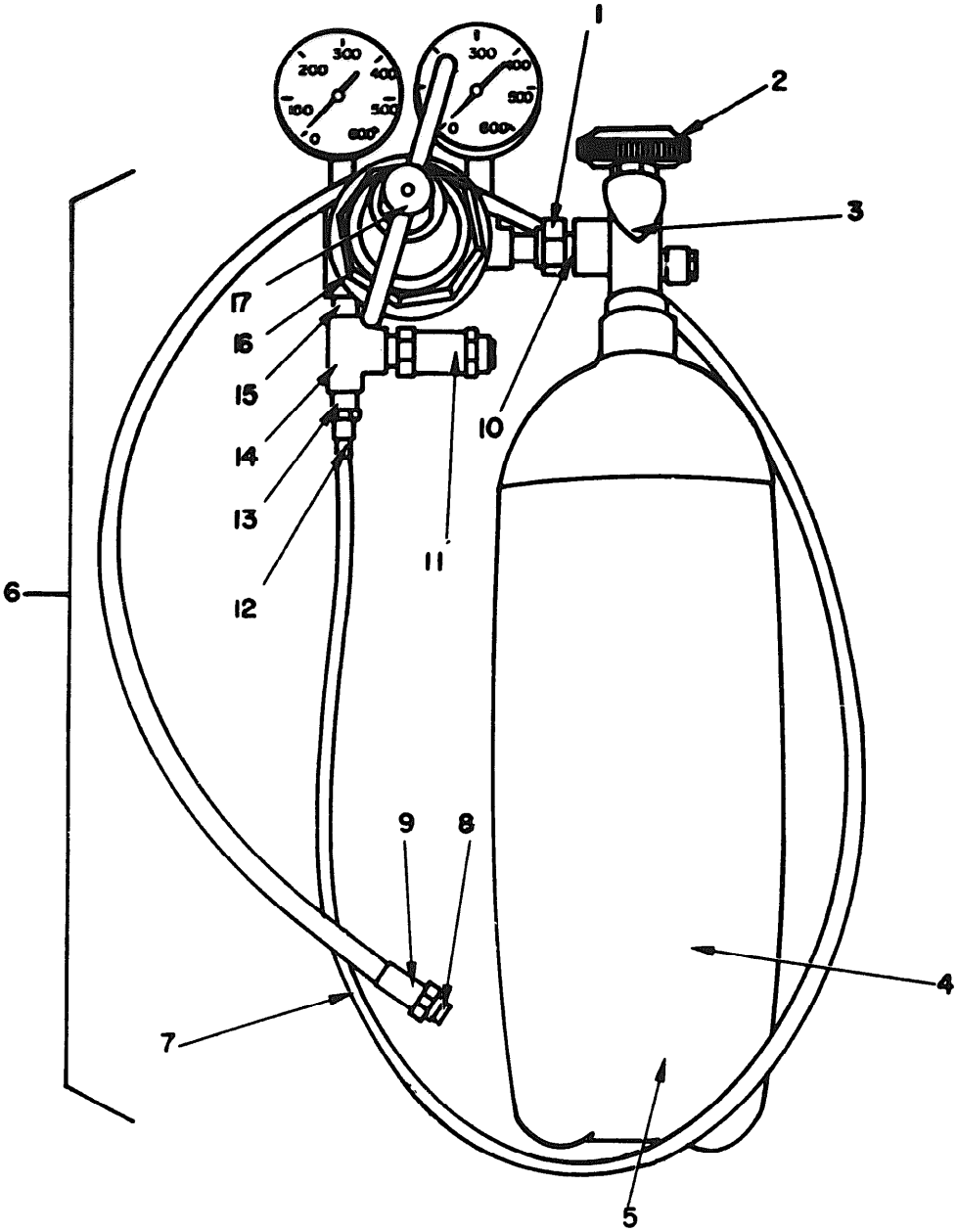
E L 6 6 2 5 - 2 4 4 6 - 4 0 P - T M - 1 9

Figure 19. Service Kit, Refrigerant MK-1171/AAS-24.



EL6625-2446-40P-TM-20

Figure 20. Bottle, carbon dioxide.



EL 6625-2446-40P-TM-21

Figure 21. Bottle, helium, modified.



SECTION VII FEDERAL STOCK NUMBER AND PART NUMBER INDEX

STOCK NUMBER	FIG. NO.	ITEM NO.	STOCK NUMBER	FIG. NO.	ITEM NO.
4720-139-4845	21	7			
4730-222-9076	20	9			
4730-410-4527	21	9			
4730-431-3525	21	15			
4730-431-6674	20	8			
4730-432-9638	21	14			
4730-451-1104	21	13			
4730-481-3017	20	5			
4730-481-9492	20	4			
4730-482-1057	21	1			
4720-491-3485	21	6			
4730-491-3488	20	6			
4720-503-5634	20	7			
4820-431-8410	21	11			
4820-432-2265	20	1			
4820-450-0949	20	2			
4820-463-5277	21	17			
4820-834-2081	21	16			
5330-585-6663	21	10			
5340-437-8807	21	8			
5850-449-0710	19	1			
6830-281-3053	20	3			
6830-660-0026	21	5			
8120-493-9628	19	3			
8120-657-5068	19	2			

SECTION VII FEDERAL STOCK NUMBER AND PART NUMBER INDEX (CONTINUED)

PART NUMBER	FSCM	FIG. NO.	ITEM NO.	PART NUMBER	FSCM	FIG. NO.	ITEM NO.
AN917-2S	88044	21	14				
GRADE A, TYPE 1	36346	21	5				
MS28776-110	96906	21	10				
N1618	42527	21	17				
N1620	42527	21	2				
190600-5C	00624	21	12				
1-8RRSSS	30780	20	5				
2ME316	11649	20	9				
2PTSS	97576	20	4				
201	42527	21	3				
244346	42527	21	4				
38-190627-4-5	00624	21	13				
400C316	02570	20	6				
411488-9	96214	21	15				
4827L64B	28968	20	2				
5120T2M320	91816	21	11				
524T1M30	91816	20	1				
5400S5-4	00624	21	9				
5400S8-4	00624	21	8				
60M2-316	28968	20	8				
633099-1	96214	19	2				
670328-1	96214	21	7				
670329-1	96214	20	7				
692216-1	96214	21	16				
692238-1	96214	21	6				
692239-1	96214	19	1				
694650-1	96214	20	3				
694652-1	96214	19	3				
696309-1	96214	21	1				

**By Order of the Secretary of the Army:**

**FRED C. WEYAND**  
*General, United States Army*  
*Chief of Staff*

**Official:**

**PAUL T. SMITH**  
*Major General, United States Army*  
*The Adjutant General*

**Distribution:**

**To be distributed in accordance with DA Form 12-31, (qty rqr block 499) Direct and General support TM 11 series requirements for OV-1D aircraft.**

DEPARTMENT OF THE ARMY  
US ARMY AG PUBLICATIONS CENTER  
1655 WOODSON ROAD  
ST LOUIS MISSOURI 63114

OFFICIAL BUSINESS  
PENALTY FOR PRIVATE USE \$300

POSTAGE AND FEES PAID  
DEPARTMENT OF THE ARMY  
DOD 314



**END**

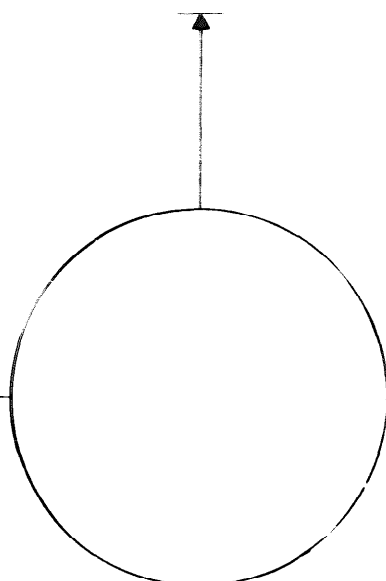
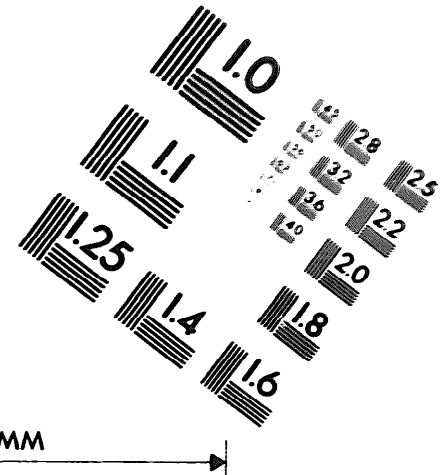
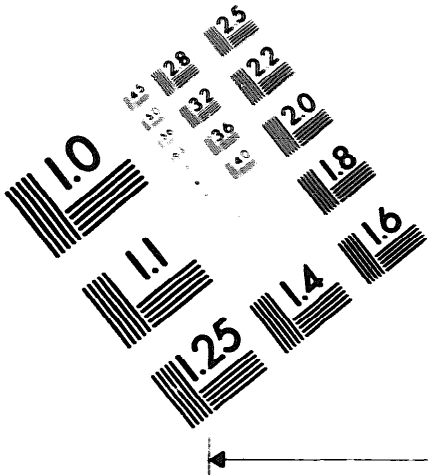
03-17-83

**DATE**





DEPARTMENT OF THE ARMY  
MICROFORM  
TEST TARGET



10 mm (e= 81 mm)  
 ABCDEFGHIJKLMNOPQRSTUVWXYZ1234567890  
 abcdefghijklmnopqrstuvwxyz\$%&/'%# 1/2 1/4 3/4 —=+ x&@\*

10 mm (e= 81 mm)  
 ABCDEFGHIJKLMNOPQRSTUVWXYZ1234567890  
 abcdefghijklmnopqrstuvwxyz\$%&/'%# 1/2 1/4 3/4 —=+ x&@\*

1.5 mm (e= 1.09 mm)  
 ABCDEFGHIJKLMNOPQRSTUVWXYZ1234567890  
 abcdefghijklmnopqrstuvwxyz\$%&/'%# 1/2 1/4 3/4 —=+ x&@\*

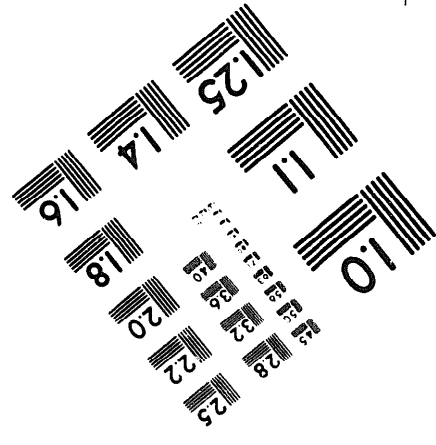
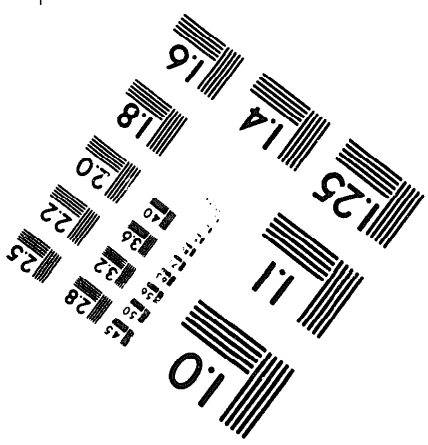
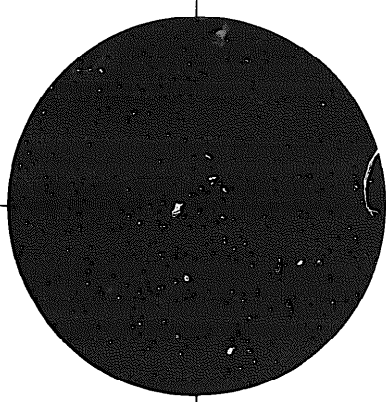
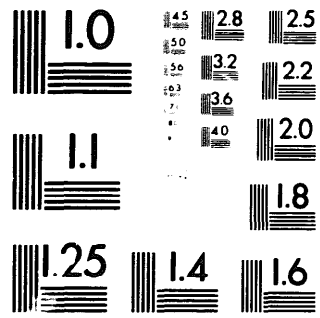
1.5 mm (e= 1.09 mm)  
 ABCDEFGHIJKLMNOPQRSTUVWXYZ1234567890  
 abcdefghijklmnopqrstuvwxyz\$%&/'%# 1/2 1/4 3/4 —=+ x&@\*

2.0 mm (e= 1.37 mm)  
 ABCDEFGHIJKLMNOPQRSTUVWXYZ  
 abcdefghijklmnopqrstuvwxyz  
 1234567890\$%&/'%# 1/2 1/4 3/4 —=+ x&@\*

2.0 mm (e= 1.37 mm)  
 ABCDEFGHIJKLMNOPQRSTUVWXYZ  
 abcdefghijklmnopqrstuvwxyz  
 1234567890\$%&/'%# 1/2 1/4 3/4 —=+ x&@\*

2.5 mm (e= 1.77 mm)  
 ABCDEFGHIJKLMNOPQRSTUVWXYZ  
 abcdefghijklmnopqrstuvwxyz  
 1234567890\$%&/'%# 1/2 1/4 3/4 —=+ x&@\*

2.5 mm (e= 1.77 mm)  
 ABCDEFGHIJKLMNOPQRSTUVWXYZ  
 abcdefghijklmnopqrstuvwxyz  
 1234567890\$%&/'%# 1/2 1/4 3/4 —=+ x&@\*



250 MM